



EECS

DOMAIN PROTOCOL

FOR

GSE – ITALY

Document Reference	AIB-2024-DPIT- GSE Italy
Prepared by	EECS Scheme Member
Release	4
Date	23 July 2024
Based on EECS Rules	Release 8 v1.6

DOCUMENT CONTROL

Version	Date	Originator	Reviewers
3	08.10.2020	GSE SPA	Markus Klimscheffskij; Peter Kerstin
4.0.1	29-09-2023	GSE SPA	Pierre-Yves Cornélis ; Kadri-Liis Rehtla
4.0.2	12.04.2024	GSE SPA	Pierre-Yves Cornélis ; Kadri-Liis Rehtla
4.0.3	26.04.2024	GSE SPA	Pierre-Yves Cornélis ; Kadri-Liis Rehtla
4.0.4	25.05.2024	GSE SPA	Pierre-Yves Cornélis ; Kadri-Liis Rehtla
4.0.5	28.06.2024	GSE SPA	Pierre-Yves Cornélis ; Kadri-Liis Rehtla

Version	Date	Approver	Responsibility
4	23.07.2024	ESG, GSG	

CHANGE HISTORY

Version	Description
4.0	Addition of gas scheme Updated to new DP template & EECS Rules 8.16 Improvements following audit (reviewed list of deviations...)

TABLE OF CONTENTS

A	Introduction.....	- 5 -
B	General	- 6 -
B.1	Scope	- 6 -
B.2	Status and Interpretation	- 7 -
B.3	Roles and Responsibilities	- 8 -
B.4	Summary: Issuance scope	- 10 -
C	Overview of National Legal and Regulatory Framework.....	- 13 -
C.1	Energy Market context for Electricity and Gas]	- 13 -
C.2	The EECS Framework.....	- 13 -
C.3	National Energy Source Disclosure.....	- 14 -
C.4	National Public Support Schemes	- 18 -
C.5	EECS Product Rules.....	- 19 -
C.6	Non-EECS certificates in the Domain	- 20 -
C.7	Local Deviations from the EECS Rules	- 20 -
D	Registration	- 21 -
D.1	Registration of an Account Holder	- 21 -
D.2	Resignation of an Account Holder.....	- 23 -
D.3	Registration of a Production Device.....	- 24 -
D.4	De-Registration of a Production Device	- 33 -
D.5	Maintenance of Production Device Registration Data.....	- 33 -
D.6	Audit of Registered Production Devices.....	- 34 -
D.7	Registration Error/Exception Handling	- 36 -
E	Certificate Systems Administration.....	- 38 -
E.1	Issuing EECS Certificates.....	- 38 -
E.2	Eligible energy for EECS Certificates.....	- 39 -
E.3	Processes	- 40 -
E.4	Measurement.....	- 45 -
E.5	Energy Storage	- 48 -
E.6	Energy Carrier Conversion.....	- 49 -
E.7	Combustion Fuel (e.g., Biomass) Input and Production Devices with multiple energy inputs -	50 -
E.8	Format	- 50 -



E.9	Transferring EECS Certificates	54 -
E.10	Rules for EECS Certificates for export and import	55 -
E.11	Administration of Malfunctions, Corrections and Errors	57 -
E.12	End of Life of EECS Certificates – Cancellation	58 -
E.13	End of Life of EECS Certificates – Expiry	62 -
E.14	End of Life of EECS Certificates – Withdrawal	62 -
F	Issuer’s Agents	64 -
F.1	Production Auditor	64 -
F.2	Production Registrar	64 -
F.3	Measurement Body(/ies)	65 -
G	Activity Reporting	66 -
G.1	Public Reports	66 -
G.2	Record Retention	66 -
G.3	Orderly Market Reporting	66 -
H	Association of Issuing Bodies	68 -
H.1	Membership	68 -
H.2	Complaints to the AIB	69 -
I	Change Control	70 -
I.1	Complaints to [EECS Scheme Member]	70 -
I.2	Disputes	70 -
I.3	Change Requests	71 -
Annex 1	Contacts List	73 -
Annex 2	Account Application/Amendment Form	76 -
Annex 3	Device Registration Form	81 -
Annex 4	Production/Consumption Declaration	85 -
Annex 5	EECS Cancellation Statement	89 -

A INTRODUCTION

This Domain Protocol describes how the EECS Standard has been implemented in a certain Domain (country/region) for a certain type of energy certificate and it indicates where that system deviates from that standard. The EECS framework including the Domain Protocol aims to ensure robustness and transparency for all parties involved.

A Domain Protocol promotes quality and clarity, as it:

- explains local rules;
- provides clear information to all stakeholders (consumers, market parties, other members, government, the EU Commission etc.);
- facilitates assessment of compliance and permissible deviation from the EECS Rules;
- facilitates audit; and
- translates local rules into a single format and language, supporting each of the above.

This document provides a standard and harmonised base to be used for domain protocols. Green background text (such as this) is provided for guidance to Members and must be removed before publication. It is strongly recommended that the structure and format of this template is followed. [Text in brackets, italic] must be replaced with the specific name applicable to the domain protocol.

- *For a gas-only Domain Protocol: the references in the DP to EECS Section N may be removed.*
- *For an electricity-only Domain Protocol: the references in the DP to EECS Section O may be removed*

Important contact information is provided in Annex 1.

B GENERAL

B.1 Scope

This section demonstrates compliance with the following EECS Rules:

A11.1.1	C3.1.1	E6.2.1a	E6.3.1	E6.3.2	N2.1.1	O2.1.1
---------	--------	---------	--------	--------	--------	--------

It must describe:

- *the legal definition of the Domain*
- *connection of devices to be in the domain: devices connected to which system are eligible for issuance of which types of certificates? (= dissemination level of the physical energy – certificate issuance perimeter) (Distribution/Transmission System for electricity and/or gas / private grids with single/multiple consumers / transport by vehicle / ...)*
- *the EECS Scheme and EECS Product(s) which apply*
- *proof that the Member has the authority to issue certificates (law reference)*
- *Members should be subject to transparent and effective regulation and oversight at a national level in relation to performance of their obligations under Legislative Certification Schemes*

The following section(s) must be included in a Domain Protocol.

- B.1.1 This Domain Protocol sets out the procedures, rights, and obligations, which apply to the Domain of Italy and relate mainly to the EECS Electricity Scheme and Gas Scheme as defined in the EECS Rules. GSE has been appointed also as the issuing body for the following GOs: Thermal, Cogeneration and Hydrogen. However, as of today, the procedure has been completed only for electric and gas GOs.
- B.1.2 Production Device qualification for this Domain will be determined such that, the Production Device is effectively located in Italy (for electricity PDs) or physically located on Italian territory (for gas PDs).
- B.1.3 The Gestore dei Servizi Energetici - GSE - (Energy Services Operator) is authorised to Issue EECS Certificates relating to the following EECS Product(s):
- EECS GO for electricity, renewable gases, hydrogen and heating and cooling
- as established by article 46 of Legislative Decree 8 November 2021 n. 199 and confirmed by the article 4.5.
- B.1.4 GSE is authorised to Issue EECS Certificates relating to the following EECS Product Type(s):
- Source: Electricity (renewable), Gas (renewable) including Methane from renewable energy, Hydrogen, Heating and Cooling.
 - Technology: High-Efficiency Cogeneration Technology only using renewable electricity (RES-CHP), implying the mandate to issue certificates for High-Efficiency Cogeneration in

accordance with EU Directive 2012/27 (EU) transposed on national legislation with Legislative Decree 104/2012.

- B.1.5 GSE is authorised to Issue EECS Certificates relating to the following Energy Carriers: Electricity (renewable), Gas (renewable) including Methane from renewable energy, Hydrogen, Heating and Cooling. Certificates are issued for electricity for the following energy sources: solar, wind, hydro-electric, Geo-thermal, marine, thermal. In case certificates are issued for gases, Certificates *are issued* for now, only for Methane from renewable energy. Theoretically, GSE is authorised to issue GOs for Hydrogen and also for renewable gas and synthetic gas (only for the renewable part) but currently there are no power plants located in Italy that has sent issuing requests. Furthermore, also for thermal GOs no production device has been registered as of today.
- B.1.6 GSE is authorised to Issue the following types of energy certificates outside of the EECS Framework: none.

B.2 Status and Interpretation

This section demonstrates compliance with the following EECS Rules:

E6.2.1d	E6.2.4	E6.3.1	E6.3.4
---------	--------	--------	--------

It must describe:

- *the status of EECS Rules in relation to:*
 - *national legislation*
 - *this domain protocol*
- *the provision for minor variations in C5*
- *the relationship between the domain protocol and the Standard Terms*
- *the precedence of the English version of the DP*

The following section(s) must be included in a Domain Protocol.

- B.2.1 This document refers to EECS Rules [8 version 1.6]. It is based on the Domain Protocol template release from February 2023.
- B.2.2 The EECS Rules are subsidiary and supplementary to national legislation.
- B.2.3 The EECS Rules and its subsidiary documents are implemented in Italy in the manner described in this Domain Protocol. Any deviations from the provisions of the EECS Rules that may have material effect are set out in section C.7 of this document.
- B.2.4 The capitalised terms used in this Domain Protocol shall have the meanings ascribed to them in the [EECS Rules](#) except as stated in section C.7 of this document.
- B.2.5 This Domain Protocol is made contractually binding between any EECS Participant and GSE by agreement in the form of the Standard Terms and Conditions.
- B.2.6 In the event of a dispute, the approved English version of this Domain Protocol will take precedence over a local language version. However, it does not take precedence over the document “Application Rules” since it is a document approved by the Ministry of the Environment and Energy Security.

B.3 Roles and Responsibilities

This section demonstrates compliance with the following EECS Rules:

A11.1.1	C3.1.1	E4.2.2	E6.2.1c	H
---------	--------	--------	---------	---

It must describe:

- *the principal roles in the domain (including at least production registrar, measurement body, production auditor as applicable)*
- *the names of the providers of those roles*
- *where the registry and/or forms can be found*
- *where the tariff for services can be found*
- *the domain protocol secures that the Product rules comply with the scheme specific rules*
- *appointment of Members Agents and Measurement Bodies*

The following section(s) must be included in a Domain Protocol.

- B.3.1 The Authorised Issuing Body for EECS GOS in Italy is GSE. Its role is to administer the EECS Registration Database and its interface with the EECS Transfer System. Since January 1st 2013 GSE has been appointed by the Ministry of Economic Development as the Competent Authority to issue Guarantees of Origin in Italy. From that date GSE is the sole competent body in Italy to issue, transfer and cancel EECS GOs from Renewable Energy Sources.
- After the publication of the Decree 224 of 14 July 2023, GSE has also been appointed by the Ministry of the Environment and Energy Security as the Issuing Body for GOs in the following

sectors: renewable gas (including Methane from renewable energy), Hydrogen, Heating and Cooling. Regarding the Methane from renewable energy GOs, these GOs can be issued from the production period starting January 2023 8article 20.3 of the Decree 224 of 14 July 2023.

GSE is the state-owned company which promotes and supports renewable energy sources in Italy. The sole shareholder of GSE is the Ministry of Economy and Finance, which exercises its rights in consultation with the Ministry of the Environment and Energy Security.

GSE is responsible for promotion of electricity from renewable sources; GSE is in charge of promoting energy efficiency, RES for heating and cooling, biofuels for transport and other uses. GSE is also involved in institutional activities and international relations.

GSE is the Parent Company of three subsidiaries:

- Gestore dei Mercati Energetici - GME - which organizes and economically manages the electricity markets as well as the environmental markets such as: GOs Bilateral Contract Platform ((PB-GO) and GOs Exchange Platform (M-GO) (see also [E.5.1.](#));
- Acquirente Unico - AU - which buys electricity in the market on the most favourable terms and resells it to distributors or retailers of the standard offer market for supply to small consumers who did not switch to the open market.
- Ricerca sul Sistema Energetico - RSE - which performs research in the electricity and energy sectors and in projects of strategic interest.

GSE operates the Registry of EECS GOs for Renewable Energy Sources it is an electronic database called “Certigy”, operational from the end of May 2023.

GSE qualifies RES production devices (hereafter referred to as PD) by checking the documentation provided by the production registrars and, eventually, by performing on- site inspections.

GSE verifies (on a sampling basis) that the PD qualification criteria are and continue to be fulfilled.

B.3.2 The Competent Authority for EECS GOs in Italy is GSE. Its role is defined by legislation to be responsible for the operation of EECS GOs in Italy. GSE is also the Competent Authority for Disclosure in Italy.

The Regulatory Authority for Energy, Networks and the Environment (ARERA) is the Body responsible for collecting volumes of green sales from suppliers, which are then matched by GSE with the volume of GOs cancelled. ARERA is also in charge of controlling the amount of green products sold.

B.3.3 For Electricity sector, the Authorised Measurement Body are the bodies listed on the website [568-19allb.pdf \(arera.it\)](#). They are the bodies established under national regulation to be responsible for the collection and validation of measured volumes of energy used in national financial settlement processes. These are grid operators responsible to collect measurement data of electricity produced and injected into the grid and to send them to GSE. Grid operators can be found via the web site of the Italian Energy Regulator (Autorità di Regolazione per Energia Reti e Ambiente): [ARERA - Estrattore Pubblico](#)
For other sectors (gas, hydrogen and thermal), the Authorised Measurement Body are the bodies established under national regulation to be responsible for the collection and validation of measured volumes of energy used in national financial settlement processes.
For all sectors, the overall energy content of the inputs used by the PD is provided by PD owners and confirmed by specific authorized testing facilities and/or by official province/regional authorities, depending on the primary energy source.

B.3.4 Contact details for the principal roles and Issuing Body agents are given in Annex 1.

B.3.5 The EECS Registration Database operated by GSE can be accessed via the website GSE - Area Clienti. From Area Clienti it is possible to access the platform (Portale GO) for the qualification of RES production devices, registration of the Account Holder and collection of measurement data (the latter it is only for electric GOs. Regarding the other type of GOs measures are collected from other platforms). From Portale GO, the operators can access to Certigy platform which is the system that manages the certificates (issuing, transfers, cancellation).

Tariffs for all GSE services are detailed in the Annex I of the “Application Rules”.

The following section(s) must be included in a Domain Protocol for each NGC that exists in the Domain and for any combination of EECS Product and ICS that can be issued.

B.3.6 In Italy no Non-Government Certificates exist and no Independent Criteria Schemes are allowed.

B.4 Summary: Issuance scope

B.4.1 In summary, GSE has been authorised to Issue the following types of energy certificates:
[fill in with “x” if applicable, provide some text or refer to the relevant section of this Domain Protocol if there are special conditions/further restrictions to the scope of a category]

Issuing Body issues certificates for Electricity		Electricity – Product Type	
	Energy Source	Source	Technology (= High-Efficiency Cogeneration)
EECS GO	Solar	x	x
	Wind	x	
	Geothermal	x	x
	Hydro	x	

	Thermal (Biomass, Bioliquid, Biogas)	x	x
	Waste	x	x
	Marine	x	
	Fossil		
	Nuclear	No nuclear plants in Italy	
National GO (non-EECS*)	none		
EECS Support Certificate	none		
EECS Target Certificate	none		
EECS NGC (name)	none		
National certificate other than GO (non-EECS*)	none		

(*) Non-EECS certificates may not be transferred over the AIB hub.

Issuing Body issues certificates for Gas		Type of Gas**		
	Energy Source	Methane	Hydrogen	Unspecified Gas
EECS GO	Renewable sources: GAS GOs= Methane from renewable energy. Hydrogen GOs= Hydrogen only produced by electrolysis with renewable energies.	x	x	
National GO (non-EECS*)	none			
EECS Support Certificate	none			

EECS Target Certificate	none			
EECS NGC (name)	none			
National certificate other than GO (non-EECS*)	none			

(*) Non-EECS certificates may not be transferred over the AIB hub.

(**) Under 'Type of Gas' the column titles shall mention all applicable categories mentioned in Fact Sheet 22 Type of Gas.

Issuing Body issues certificates for:		Thermal energy		
National GO (non-EECS*)	<i>Italy issues only EECS GOs</i>			
EECS Target Certificate	<i>[please specify characteristics]</i>			
National certificate other than GO (non-EECS*)	<i>[please specify characteristics]</i>			

(*) Non-EECS certificates may not be transferred over the AIB hub.

C OVERVIEW OF NATIONAL LEGAL AND REGULATORY FRAMEWORK

C.1 Energy Market context for Electricity and Gas]

This section describes the local architecture of the energy market for the relevant Energy Carriers.

It describes the stage of liberalisation of the energy market and the level of regulatory intervention in market functioning (e.g., by reference to the governing European Directive and year of liberalisation).

Where not fully liberalised as in the relevant EU market directive, this section sets out the market model and its main roles (e.g., grid operator, supplier, producer, regulator, consumer, etc.) and their mutual (in)dependences. In particular, clarifies the extent of independence of grid operators from suppliers and producers. Regarding the Issuing Body, it also situates the other roles this body performs in the energy market.

Provide an indication of the size of the relevant energy market.

(e.g., weblink to energy regulator or other relevant website of the relevant country, ...)

The Authorised Issuing Body for EECS GOs in Italy is GSE. Its role is to administer the EECS Registration Database and its interface with the EECS Transfer System.

Since January 1st, 2013, GSE has been appointed by the Ministry of Economic Development as the Competent Authority to issue Guarantees of Origin in Italy. From that date GSE is the sole competent body in Italy to issue, transfer and cancel EECS GOs from Renewable Energy Sources.

GSE is the state-owned company which promotes and supports renewable energy sources in Italy. The sole shareholder of GSE is the Ministry of Economy and Finance, which exercises its rights in consultation with the Ministry of Economic Development.

GSE is responsible for promotion of electricity from renewable sources; GSE is in charge of promoting energy efficiency, RES for heating and cooling, biofuels for transport. GSE is also involved in institutional activities and international relations.

C.2 The EECS Framework

This section demonstrates compliance with the following EECS Rules:

D3.1.2	E6.2.1b	E6.2.1d	N8	O.10
--------	---------	---------	----	------

It must describe:

- *the local legislation and Directive (and treaty if applicable) to which the EECS Product(s) relate*
 - *include links to web versions*
 - *include a short summary of the main provisions, specifically those implementing any relevant Directives; and for satisfying the Core Principles of the EECS Rules*
- *the authorisation of the issuer*

The following section(s) must be included as applicable in a Domain Protocol.

C.2.1 For this Domain, the relevant local enabling legislation is as follows: in transposition of the provisions of Article 19 of Directive (EU) 2018/2001 on the promotion of the use of energy from renewable sources, Article 46 of Legislative Decree 8 November 2021 n. 199 establishes specific provisions regarding Guarantees of Origin (hereinafter, also GO).

In particular, the article 46.9 delegates to a Decree of the Minister of the Environment and Energy Security, on a proposal from ARERA, the definition of the methods:

- for the implementation of article 46 and the updating of the methods for issuing, recognizing and cancelling the GOs from renewable sources as well as their methods of use by energy suppliers in the context of energy supplied to consumers on the basis of contracts concluded with reference to the consumption of energy produced from renewable sources;
- for the use of the revenues deriving from the sale, by the GSE, of the GOs in its availability (through the auctions), with the purposes of a reduction of the tariff components that feed the respective incentive mechanisms;
- with which the precision, reliability or authenticity of the GOs issued by other Member States is verified, providing that, in the event of refusal to recognise, such refusal is promptly notified to the European Commission.

For the implementation of the aforementioned provisions, it was published the [Decree of the Minister of the Environment and Energy Security of 14 July 2023, n. 224](#) (hereinafter, GO Decree).

The GO Decree was published on the website of the Ministry of the Environment and Energy Security, and it is in force from 18 July 2023.

In accordance with the provisions of article 17, paragraph 1, of the GO Decree, it was published the document named “Application Rules” that regulates the application rules connected to the management of the processes relating to the functionality of the national register of GOs.

Under the GO Decree, GSE has been properly appointed as an Authorised Issuing Body for electricity, renewable gases (including Methane from renewable energy), hydrogen and heating and cooling GOs.

C.2.2 GSE has been properly appointed as an Authorised Issuing Body only for EECS Product(s).

C.3 National Energy Source Disclosure

This section demonstrates compliance with the following EECS Rules:

E3.3.14			
---------	--	--	--

It must describe:

- *the relevant legislation, regulations and supporting procedures, including specific provisions and a link to any relevant pages on the internet]*

- *the disclosure methodology and process, including linkage between EECS certificates and disclosure in this domain, or a link to the relevant pages on the internet*
- *the calculation methodology of the residual mix, or any other default mix relevant for electricity disclosure. Link to any relevant pages on the internet giving such information*

(Where relevant this section describes separate rules for disclosure of different energy carriers)

C.3.1 For this Domain, the authorised body for supervision of Disclosure of the origin of energy towards consumers is GSE. This body is responsible for supervision of disclosure of the origin of the following Energy Carriers: electricity.

C.3.2 Supervision of disclosure in this nation is allocated to a single competent body: GSE.

C.3.3 The legislation and regulation for disclosure are available on the article 8 of the GO Decree. The methodology and process for disclosure, in compliance with the GO Decree (article 17 comma 2), was defined within 180 days from its publication. Since 2021 GSE follows the AIB methodology for disclosure “Issuance Based Residual Mix Calculation Methodology”.

Regarding the GAS sector, the Article 20.7 of the GO Decree states that the Authority proposes to the Ministry a procedure regarding gas disclosure (other than transport sector) and thermal disclosure. GSE is currently waiting for this procedure to be validated.

Summary of the disclosure methodology and process:

The [Law No. 125 of 3rd August 2007](#) has transposed the Directive 2003/54/EC introducing the obligation to disclose in Italy.

Article 1(5) states that electricity suppliers must specify in or with the bills and through any promotional material made available to final customers the contribution of each energy source to the overall fuel mix of the supplier over the previous two years and to indicate where the information concerning the environmental impacts of such production lies.

It requested the publication of a Ministerial Decree (The [Ministerial Decree of 31st July 2009](#)) to define the residual mix calculation methodology, producers’ residual mix and suppliers’ mix.

The publication of the Ministerial Decree [224 of the 14 of July 2023](#) replaced and repealed the Ministerial Decree of 31st July 2009.

The Article 8 of the Ministerial Decree 224 of the 14 of July 2023 has provided dispositions on how electricity suppliers are obliged to specify in or with the bills and through any promotional material made available to final customers:

- The contribution of each energy source to the overall fuel mix of the supplier over the previous year.
- Information regarding CO₂ and radioactive waste content of the electricity. Information on environmental impact, in terms of CO₂ emissions and radioactive waste resulting from electricity production by means of the overall energy mix of the supplier from the previous year.

The GO is the sole tool to be used by electricity suppliers to disclose RES quota in energy mix.

The Decree asked to GSE to define, 180 days from the publication of the Decree, a Procedure for the calculation of suppliers’ energy mix and how Terna and Acquirente Unico communicates to GSE data for the national mix calculation.

Disclosure process, verified by GSE, follows the following steps and schedule:

- By 31st of March each year, Terna communicates production data to GSE split by the following sources: renewables, natural gas, coal, oil products, nuclear, lignite, others.
- By 31st March each year suppliers communicate their data on sales and imports to GSE, specifying for each contract the POD (point of delivery) and the total number of GOs cancelled.
- By 30th June each year GSE calculates the national residual mix, the residual mix and the suppliers’ own supply mix and publishes them in the GSE website and in the Fuel Mix System.
- Every four months and by 31th July, suppliers have to disclose their mix to end consumers along with the national average production mix fed into the electricity grid. The statement includes three categories of information for the previous year: the national mix calculation, the suppliers’ energy mix, the suppliers’ energy mix for each contract.

Fonti primarie utilizzate	Composizione del mix energetico per contratto (%)	Composizione del mix energetico nazionale utilizzato per la produzione di energia elettrica immessa nel sistema elettrico (%)	Composizione del mix energetico utilizzato per la produzione di energia elettrica venduta (%)
	Anno (n-1)	Anno (n-1)	Anno (n-1)
Fonti Rinnovabili			
Carbone			
Lignite			
Gas Naturale			
Prodotti Petroliiferi			
Nucleare			
Altre Fonti			

C.3.4 The methodology of the residual mix calculation follows the “Issuance Based Residual Mix Calculation Methodology”. Calculation of the residual mix is done according to the following formulas:

A. The **Domestic (or National) Residual Mix** is calculated as follows:

- the sum of the energy mixes at injection into the grid for each energy sources minus
- Issued GOs plus
- Expired GOs

The total volume of the Domestic Residual Mix is calculated as the sum of volumes of different energy sources in the Domestic Residual Mix.

$$\sum_{x=1}^n \text{Domestic Residual Mix}_{\text{Energy Source}_x} = \text{Domestic Residual Mix}$$

The share of Energy Source x in the Domestic Residual Mix is calculated as follow:

$$\% \text{ in the Domestic } RM_{Energy\ Source_x} = \frac{Domestic\ Residual\ Mix_{Energy\ Source_x}}{Domestic\ Residual\ Mix}$$

The volume of the Domestic Residual Mix is compared with the volume of Untracked Consumption in the country. The Untracked Consumption is obtained by deducting all Cancellations from the country's yearly electricity consumption.

$$Electricity\ consumption - \sum_{x=1}^n Cancelled\ attributes_{Energy\ Source_x} = Untracked\ Consumption$$

The difference between the volumes of the Domestic Residual Mix and the Untracked Consumption is the deficit or surplus of Attributes in the country. In case the country has an Attribute surplus, the surplus is collected to the European Attribute Mix. In case the country has an Attribute deficit, the deficit needs to be fulfilled with Attributes from the European Attribute Mix.

If Domestic RM > Untracked Consumption → Surplus

$$Surplus = Domestic\ RM - Untracked\ Consumption$$

If Domestic RM < Untracked Consumption → Deficit

$$Deficit = Untracked\ Consumption - Domestic\ RM$$

B. The Final Residual Mix is calculated as follows:

In case of Surplus, the shares of energy sources remain unchanged when moving from Domestic to Final Residual Mix in surplus countries.

In case of Deficit, the volume of deficit is taken from the EAM foreseen by the AIB.

$$Domestic\ Residual\ Mix_{Energy\ Source_x\ Country_y} + Intake\ from\ the\ EAM_{Energy\ Source_x\ Country_y} = Final\ Residual\ Mix_{Energy\ Source_x\ Country_y}$$

The share of Energy Source in the Final Residual Mix is:

$$\% \text{ in the Final } RM_{Energy\ Source_x\ Country_y} = \frac{Final\ Residual\ Mix_{Energy\ Source_x\ Country_y}}{Final\ Residual\ Mix_{Energy\ Source_x}}$$

C. Total Supplier Mix for each Supplier

It is obtained by summing the volume of Cancellations per Attribute with the Final Residual Mix

$$TSM_{Energy\ Source_x\ Country_y} = Final\ RM_{Energy\ Source_x\ Country_y} + Cancelled\ Attributes_{Energy\ Source_x\ Country_y}$$

The energy source shares of TSM are calculated by dividing the individual energy source volumes with the total consumption of Italy:

$$\% \text{ in the } TSM_{Energy\ Source_x\ Country_y} = \frac{TSM_{Energy\ Source_x\ Country_y}}{Consumption_{Country_y}}$$

- C.3.5 Cancellation for usage in another Domain (i.e., Ex Domain Cancellations) are not allowed
- C.3.6 The results of the supervision on disclosure are available on the GSE website and in the Fuel Mix System.

C.4 National Public Support Schemes

This section demonstrates compliance with the following EECS Rules:

None directly			
---------------	--	--	--

It must describe:

- *the relevant currently public (investment and/or operational) support schemes, how they work and how they interact with electricity and, if applicable, gas GOs issuing and source disclosure (especially in relation to GO), together with a link to any relevant pages on the internet ensuring all support schemes listed for this domain in Fact Sheet 3 are included*
- *Please clarify whether GOs are issued for supported energy and what procedures are in place in this regard, and how such GOs are marked regarding the data fields on the GO with the type of support and the description of the support scheme (as in EECS Fact Sheet 3).*
- Green Certificates - The Ministerial Decree of 6th July 2012 provided dispositions on the transition from the Green Certificate scheme to a feed-in premium scheme applying to electricity produced by RES power plants become operational within 31st December 2012 for the remaining incentive period after 2015. The quota obligation system under the Green Certificates scheme was abolished from January 1st 2016.
- Feed-in Tariff for small RES production devices (up to 1 MW). The amount of tariffs is differentiated by source. (Regulatory framework:

Ministerial Decree 18 December 2008 (Italian only):

https://www.gazzettaufficiale.it/do/gazzetta/serie_generale/3/pdfPaginato?dataPubblicazioneGazzetta=20090102&numeroGazzetta=1&tipoSerie=SG&tipoSupplemento=GU&numeroSupplemento=0&progressivo=0&numPagina=16&edizione=0&elenco30giorni

Ministerial Decree 6 July 2012:

https://www.mise.gov.it/images/stories/normativa/DM_6_luglio_2012_sf.pdf

Ministerial Decree 5 July 2012 (Italian only):

https://www.mise.gov.it/images/stories/normativa/dm_5_luglio_12_sf.pdf

- Sliding Feed-in premium for all RES production devices becoming operational from 1st January 2013. (Regulatory framework:

Ministerial Decree 6 July 2012:

https://www.mise.gov.it/images/stories/normativa/DM_6_luglio_2012_sf.pdf

Ministerial Decree 5 July 2012 (Italian only):

https://www.mise.gov.it/images/stories/normativa/dm_5_luglio_12_sf.pdf

Ministerial Decree 4 July 2019 (Italian only):

<https://www.gazzettaufficiale.it/eli/id/2019/08/09/19A05099/sg>

In the EECS GO system the information regarding whether and to what extent the unit of energy has benefited from any support scheme is provided as follows:

- In the phase of qualification of a RES power plant, it is recorded if the installation benefits from any kind of support (e.g. investment support, production support or both);
- The above-mentioned information is thus recorded on each certificate issued for the production of that power plant.

No impacts on the disclosure system comes from the relation between EECS GOs and support schemes.

The Support schemes for the GAS sector are:

Ministerial Decree 2 March 2018 (Italian only), for the “Promotion of the use of biomethane and other advanced biofuels in the transport sector”

<https://www.gazzettaufficiale.it/eli/id/2018/03/19/18A01821/SG>

Ministerial Decree 15 September 2022 (Italian only), that implements the article 11, comma 1 and the article 14, comma 1, letter b), of the Legislative Decree n. 199/2021.

https://www.gazzettaufficiale.it/atto/serie_generale/caricaDettaglioAtto/originario?atto.dataPubblicazioneGazzetta=2022-10-26&atto.codiceRedazionale=22A06066

All GOs have the information regarding support (following AIB Fact Sheet 3).

C.5 EECS Product Rules

This section demonstrates compliance with the following EECS Rules:

E6.2.1f	E6.2.1g		
---------	---------	--	--

It must describe:

- *the relevant product rules (in summary)*
- *the purpose of each product*

The following section(s) must be included in a Domain Protocol.

C.5.1 The EECS Product Rules as applied in *Italy* are set out within sections Registration and Certificate Systems Administration of this document.

C.6 Non-EECS certificates in the Domain

Where in the Domain there are non-EECS Certificates in operation, this section describes its status and main framework of operation.

This may apply to national guarantees of origin for which there are no EECS provisions or recognition in place. Examples are national GOs, GOs/ certificates for heating and cooling, voluntary schemes, etc.

C.6.1 Not applicable

C.7 Local Deviations from the EECS Rules

This section identifies those areas where there are minor differences from the EECS Rules without impacting the integrity of EECS Certificates.

It is intended for other AIB members, reviewers and traders operating across domains so that they can understand specific local arrangements. It is specified which section of the EECS Rules is being deviated from. These differences must not have any impact on the integrity of EECS Certificates.

- C.7.1 Deviation from EECS Rules C3.4.1(b): Regarding the frequency of issuing of EECS certificates (see E1), even though there is an obligation on grid operators to provide GSE with measurement data on a monthly basis, there is no obligation on producers to request issues of certificates with the same frequency. In all cases a production period of one month is recorded on GOs.
- C.7.2 Deviation from EECS Rules C3.5.1(b) and C3.5.4: Regarding production devices with rated output < 50 kW, which are included in one of the categories listed in E3.4 (subsidized, net-metered, etc.), GSE issues GOs based on the production of electricity with an aggregated value of a virtual PD, resulting as the total production rated output of all PDs included in the same market zone. For these GOs, Ministerial Decree 224 stipulates the criteria according to which the minimum information can be reported in aggregate form.
- C.7.3 Deviation from EECS Rules C3.4.4: GSE may issue EECS GOs no earlier than January of the year in which the registration is completed, provided all necessary Entry and Exit Measurements have successfully been verified and approved by Measurement Bodies, Certification Bodies and other relevant Authorities, as detailed in D6.1.

D REGISTRATION

Where relevant this section describes separate rules for disclosure of different energy carriers.

D.1 Registration of an Account Holder

This section demonstrates compliance with the following EECS Rules:

G2.2.1			
--------	--	--	--

It must describe:

- *Who can be an account holder*
- *How to apply for registration (e.g., website form)*
- *The Know Your Customer form and process which should include any anti-fraud verification*
- *How long the process normally takes*
- *That the Standard Terms & Conditions must be signed*
- *Where the tariff of services can be found*
- *How users belonging to the account holder gain access to the registry*

A sample or template application form must be included as an appendix, or a web link to the online form should be provided.

- D.1.1 Any – legal or natural – person is entitled to take part in the Italian EECS GO’s Registry. GSE differentiates between the following roles:
 - Producers

-
- Suppliers
 - Traders
 - Final users
 - Natural Gas Filling Station (only for the Gas Transport sector)
- D.1.2 In order to be registered and have an account opened, applicants need to follow the registration wizard procedure available at <https://areaclienti.gse.it>
- D.1.3 The IT system provides the applicants with User ID and Password to access the EECS GO's Registry.
- D.1.4 After the registration, in order to open an account holder, all applicants (except final users) have to send this following document:
- Company Certificate issued by the Chamber of Commerce or a sworn translation of a foreign declaration of the Chamber of Commerce
- Final users have to send only a:
- Declaration in accordance with articles 46 and 47 of Decree of the President of the Republic no. 445 of 28 December 2000
- D.1.5 For each type of registering subject, an Account Holder profile with different functionalities will be created.
- D.1.6 For each profile an Account Holder is assigned regardless of the sector in which it operates (electricity, gas, etc..).
- D.1.7 Application for registering within the Italian EECS GO's Registry can be completed by following the procedures described in the "Manuale Utente Garanzie di Origine", which can be found in the Documents section of the GSE website – www.gse.it
- D.1.8 A code number will be assigned to each Account Holder profile (multiple profiles will be assigned for multiple Accounts).
- D.1.9 Once the Account Holder profile is opened, the applicant can access to the platform, named "Certigy", for make all operations with certificates.
- D.1.10 Only in case of auctions, in addition to the "Company Certificate issued by the Chamber of Commerce or a sworn translation of a foreign declaration of the Chamber of Commerce", already available, market operators have to send to GSE the following documents, through the portal GO:
- Certificate attesting the absence of criminal proceedings;
 - Certificate released by a competent authority stating that the Company legal representative; CEO and general director have not been convicted of certain types of crimes (e.g. fraud, serious damages to the State, etc.);
 - Certificate attesting the admission to participate to the Bilateral Platform managed by GME;

- Formal request asked by GSE to participate to the auction session (specific template downloading on portal GO);
- Identification document.

D.1.11 To open an account participants must sign the Standard Terms and Condition (the STC includes the tariff of services).

D.1.12 GSE has the right to require further information/documents when deemed necessary.

D.1.13 No deadlines have been set to open an account. However, when performing public activities, GSE is subject to laws and rules applied to Public Administration Bodies. Regarding administrative procedures, law No.241/90 sets a time limit of 30 days to conclude any procedure, where no different deadlines have been established. To open an account participants must sign the Standard Terms and Condition (the STC includes the tariff of services).

D.1.14 GSE has the right to require further information/documents when deemed necessary.

D.1.15 No deadlines have been set to open an account. However, when performing public activities, GSE is subject to laws and rules applied to Public Administration Bodies. Regarding administrative procedures, law No.241/90 sets a time limit of 30 days to conclude any procedure, where no different deadlines have been established.

D.1.16 GSE exchanges information and works closely together with the Italian VAT Authority (Guardia di Finanza) that has an office in the GSE’s building.

D.2 Resignation of an Account Holder

This section must demonstrate compliance with the following EECS Rules:

None directly			
---------------	--	--	--

It must describe:

- *How the account holder should tell the registry operator of a resignation*
- *How the registry operator will respond:*
- *Closing the account*
- *Securing the account*
- *What happens to any certificates still in the account*
- *When these steps will happen*
- *How outstanding charges become due*

A sample or template resignation form (if used) should be included as an appendix, or a web link to the online form should be provided.

- D.2.1 The Account Holder must notify GSE of the intention to close its Account in written form. The effective date of closure must not be less than 30 working days from the date of receipt by GSE.
- D.2.2 When closing an Account, the Account Holder is responsible for paying any outstanding payments to GSE. GSE is not responsible for refunding any already paid fee of the Account Holder.
- D.2.3 GSE will amend the EECS Registration database accordingly.
- D.2.4 When an Account is closed, it is no longer active: any access to it is inhibited and, where EECS GO's still remain on it, they are not transferable anymore. Such EECS GO's will thus be collected into the National Residual Mix once they expire.

D.3 Registration of a Production Device

This section demonstrates compliance with the following EECS Rules:

C2.1.1	C2.1.2	C2.2.4	D4.1.2	E3.3.10	E3.3.11	N6.2	O6.2
--------	--------	--------	--------	---------	---------	------	------

It must describe:

- *Who can register a production device*
- *What is acceptable evidence of authorisation (if not the owner)*
- *That each EECS Product supported in this DP must be identified along with any applicable Independent Criteria Schemes (noting that other ICS may be applicable and to check the registry website for the latest listing)*
- *The eligibility criteria for each EECS Product listed*
- *The information required to register a device*
- *That the account where certificates are to be issued must be identified*
- *How the metering data will be provided*
- *The verification process*
- *The role of the production registrar*
- *A site inspection is normally required*
- *Possible data sources*
- *Access to the device and its records is a condition of registration*
- *The assignment of a unique device number*
- *Publication of device information*
- *Where the tariff for services can be found*
- *How long the process should take*

- *Procedures for: the registration of Production Devices for the purposes of EECS Products under the relevant EECS Scheme are robust, effective, efficient, and adequate.*

A sample or template registration form must be included as an appendix as this should include all the data items required and can avoid having to list them. A web link to the online form (if used) should be given.

Please adjust the following flow diagram to describe the process in your domain (you can create flowcharts with e.g., [Microsoft Visio](#)).

Only the owners (also called “producers”) of all renewable production devices in operation, with the exemption of the cases listed in the section C.7 for which GSE issues and automatically transfers to its own account (free of charge) EECS GOs related to the corresponding electricity produced and injected into the grid, are entitled to qualify the PD by asking to GSE to register it in order to get EECS GOs.

Before registration of a production device Producers have to register themselves and their power of attorney by sending to GSE the documents listed in the above paragraph **D.1.**

For each plant configuration is assigned a Dissemination Level.

Dissemination Level (DL)	Applicable for Energy Carriers	GOs operations
DL 1 – Consumed by the operator of the production device	Electricity, Renewable Gases, Hydrogen	Issuing and automatic cancellation
DL 2 – Transferred over a Distribution or Transmission System	Electricity, Renewable Gases, Hydrogen	Issuing and Transferring
DL 3 – Transferred over a Closed Distribution System	Electricity, Renewable Gases, Hydrogen	Issuing and Transferring
DL 4 – Transferred over any other network than a Distribution or Transmission System or Closed Distribution System	Electricity, Renewable Gases, Hydrogen	Issuing and Transferring
DL 5 – Transferred over a Heating or Cooling Grid	Heating and Cooling	Issuing and Transferring
DL 6 – Transported by vehicle	Renewable Gases, Hydrogen	Issuing and Transferring
DL 8 – Unspecified	Renewable Gases, Hydrogen	<ul style="list-style-type: none"> - Issuing and Transferring - Automatic cancellation

ELECTRICITY PDs

Flow-chart 1: Description of the PD registration process

The Owners (Producers) of all renewable energy production devices, in order to obtain GOs, must first register the Production Device, by means of a process called “Qualifica IGO”.

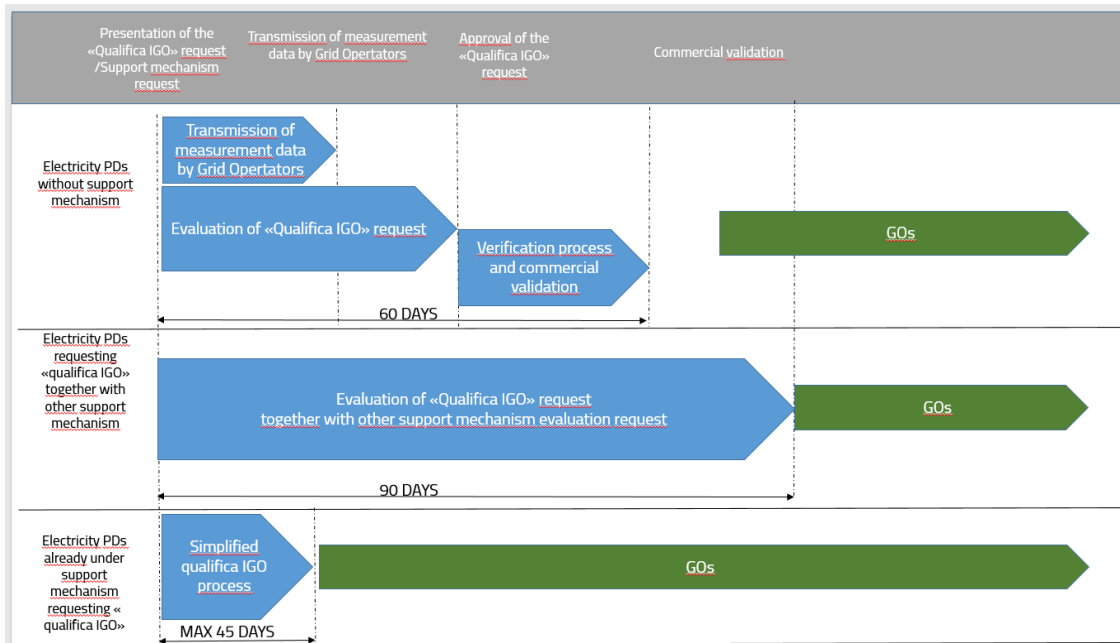
The process can be completed by:

- Registration in the “Area Clienti” of the GSE website (if not already registered for other applications with GSE);
- Access to the “Portale GO” in order to complete the qualification request. A PD for electricity can be registered on the Portale GO by completing the following steps:
 - Presentation of a qualification request to GSE ;
 - Technical analysis by GSE to validate the request ;
 - Acquisition of energy measures (gross production and net production), validated by national TSO ;
 - Commercial validation ;

If a PD has been previously qualified by GSE for other types of incentive mechanisms, a simplified qualification process is carried out.

The Portale GO is interconnected with other GSE platforms in order to allow a contemporary “Qualifica GO” with other types of qualification processes.

The timeline for completion of a qualification process, and registration of a PD for electricity GOs, is illustrated as follows:



The owner of a PD must follow the following timeframe for registration of a PD, depending on when the PD has started production.

Operational date	Application for registration	
	from	To
In the years before the year "n"	21st January year "n"	30th September year "n"
Between the 1° January and the 31st August year "n"	21st January year "n"	30th September year "n"
Between 1st September and 31st December year "n"	1st October year "n"	20th January "n+1"

If the above deadlines are not respected, the PD cannot be registered in year "n", but the owner can apply for registration in the following years.

The application can be sent to GSE exclusively electronically, by logging in onto the EECS GOs Account.

Before starting the registration procedure in the EECS GOs Registry producers have to register their production devices in the Italian TSO Registry to receive the PD unique code "CENSIMP" that they have to declare the EECS GOs Registry for the registration of the PD.

When a *Qualifica IGO request* is presented, a set of technical data and specific information of the PD must be transmitted.

Afterwards, where not already registered within GSE's archives, the applicant needs to upload some PD relevant documents such as:

- Technical description of the plants ;
- Line diagram ;
- Operating rules issued by the relative system operator ;
- Official documents "UTF" issued by VAT Authority (Guardia di Finanza) ;
- Declaration attesting that the PD has already received all authorizations needed, including the expected date of commissioning.

Where the documents requested are already available within GSE's database, the registrant is not asked to upload them again.

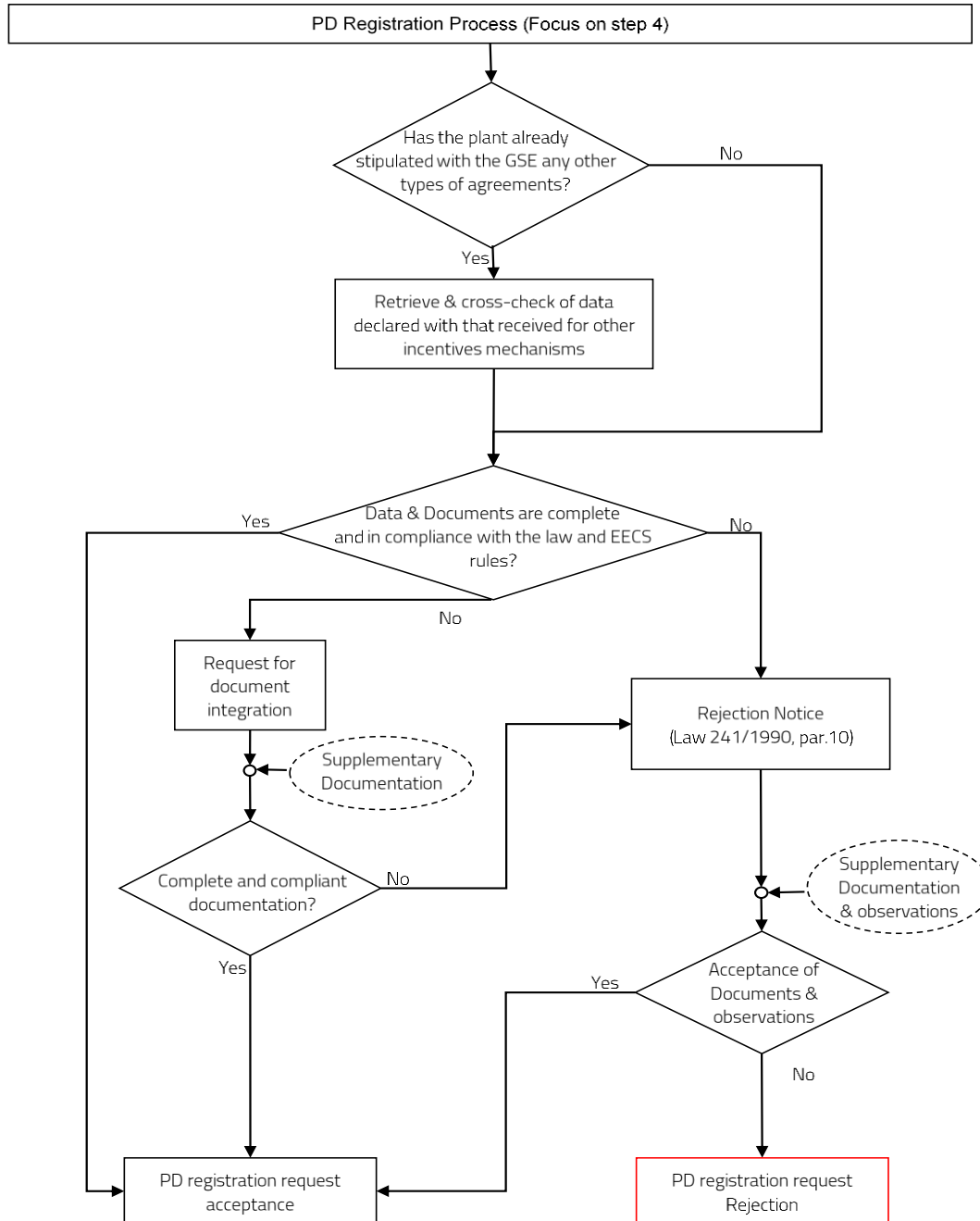
GSE proceeds at evaluating the application and, where it needs, asks the registrants to provide further information/documents (see the flow-chart 2).

Within 60 days GSE has to communicate to the registrant if the PD can be qualified or if the application has to be rejected. In other cases, the timeline for the registration of a production device depends on the specific conditions of that plant, especially whether GSE has to audit the plant (documentation audits). When GSE asks for documentation audit the timeframe of 60 days is frozen to permit the accomplishment of the documentation audit.

Any dialogue between GSE and the registrant during the registration process is electronically (via the EECS GOs Registry).

Once the application for registration is accepted the PD’s registration is coded.

Flow-chart 2: Additional information requested by GSE



The outcome of the “Qualifica IGO” process, and the subsequent registration of a PD, depends on:

- Verification of generic requirements for the Producer and the PD;

- Analysis of the documentation transmitted by the Producer, including information on the type of renewable energy source, the plant configuration, the rated power outcome of the PD, the grid connection configuration, the process and technology used for the production of renewable energy;
- Check of correspondence between the information found in the Portale GO and the information given during the Qualifica GO.

The PD owner must notify every change occurred. GSE can anyway control the maintenance of PDs data since almost all production devices registered in the EECS GOs Registry also have another contractual relationship with GSE because of any support scheme eventually granted and because of GSE's role in the Electricity National Statistics System. This means that GSE has different means to gather the relevant information about the production devices located in the Italian Domain.

GSE conducts audits of production devices with a priority to plants that also receive some kind of support, especially the all-inclusive feed in tariff. When such plant is qualified for EECS GOs as well, GSE checks this too.

GSE works closely together with the VAT Authority (Guardia di Finanza) that has an office in the GSE's building. GSE exchanges information also with the Police for performing on-site inspections of production devices.

GAS PDs

The net energy produced by renewable gas production plants, as defined by the article 2, paragraph 1, letter k) of the Ministerial Decree 224 of the 14 July 2023, is entitled to the issuance of GOs.

GSE issues GAS GOs for the net energy produced by:

- A. Methane from renewable energy production plants, in particular:
 - i. Methane from renewable energy production plants that receives the following supports:
 - plants incentivized by the GSE pursuant to Ministerial Decree 2018 (only transport sector).
 - plants incentivized by the GSE pursuant to Ministerial Decree 2022 (transport and other uses sector);
 - ii. Methane from renewable energy production plants that don't receive any kind of support.
- B. RENEWABLE HYDROGEN production plants.
- C. OTHER RENEWABLE GASES production plants. By "other renewable gases" we mean renewable gases other than Methane from renewable energy (A) and renewable hydrogen (B).

The "Qualifica IGO" is necessary for the issuing of GAS GOs recognized for the net energy associated with the gas produced.

Ai.) Methane from renewable energy PRODUCTION PLANTS RECEIVING PUBLIC INCENTIVES

For PDs listed in the point Ai.) the “Qualifica IGO” is recognized at the same time as the positive conclusion of the evaluation investigation aimed at accessing the incentives (Methane from renewable energy incentive mechanisms introduced by the Ministerial Decree 2018 and Ministerial Decree 2022). For these PDs the following information are defined:

- The “gas usage” sector of the Methane from renewable energy that must correspond to the “gas usage” in cancellation (FS 21). The gas usage is verified on the basis of the GHG emissions reduction value achieved with the raw materials used (biomasses used in the gas production process), in accordance with the minimum sustainability requirements provided for by article 42 of Legislative Decree n. 199/2021 for each gas usage sector;
- The operational date;
- Auxiliaries services percentage (in order to calculate net energy production);
- Algorithm for the calculation of the energy for which can be recognized GOs.

For these kinds of plants, GSE issues and automatically transfers to its own account (free of charge) EECS GOs related to the corresponding Methane from renewable energy produced in the following cases:

- PDs incentivized by the GSE pursuant to Ministerial Decree 2018 (all of them);
- PDs incentivized by the GSE pursuant to Ministerial Decree 2022 for which is recognized the Feed in Tariff.

Aii.) METHANE FROM RENEWABLE ENERGY PRODUCTION PLANTS NOT RECEIVING PUBLIC INCENTIVES

For PDs listed in the point Aii.), Producers can make a “Qualifica IGO” request to GSE in order to get EECS GOs. The request can be sent to GSE only after they became operational.

When a “Qualifica IGO” request request is presented, a set of technical data and specific information of the PD must be transmitted.

For these kinds of Methane from renewable energy production plants (PDs not receiving any incentives) the requirements to obtain the “Qualifica IGO” are the following:

- the Producer” must be the holder of the authorization for the construction and operation of the plant as well as the connection contract to the grid with the obligation to connect third parties, where applicable;
- the authorization must be valid and effective;

- the PD must be powered by renewable sources;
- the PD must be operational;
- the Methane from renewable energy produced must comply with the sustainability requirements referred to in article 42 of the Legislative Decree. N. 199/2021 for the specific gas usage sector;
- the documentation transmitted must be complete and exhaustive and must allow the determination of:
 - The location of the plant;
 - The category of intervention (“new construction”, for newly built PDs, or “conversion” for existing PDs converted from biogas to Methane from renewable energy production);
 - Type of plant and Methane from renewable energy production process;
 - Plant configuration and method of connection to the network (as defined in article 2, paragraph 1, letter t), point 2, of the GO decree);
 - capacity of the plant in Smc/h;
 - operational date;
 - raw materials/biomasses used in the production process (type and annual quantities);
 - value of reduction of GHG emissions achieved by the plant through the use of biomass;
 - Localization and type of measurement meters;
 - How auxiliary services are supplied;
 - Percentage factor of Auxiliaries services.

The PD owner is held to issue all declarations in accordance with articles 46 and 47 of Decree of the President of the Republic no. 445 of 28 December 2000 and under the procedure set out in art. 38 thereof, i.e. declaring that he/she is aware of the loss of benefits, if any, arising from or of criminal penalties inflicted in case of misrepresentations as per articles 75 and 76 thereof.

The outcome of the “Qualifica IGO” process, and the subsequent registration of a PD, depends on:

- Verification of generic requirements for the Producer and the PD;
- Analysis of the documentation transmitted by the Producer, including information on the type of renewable energy source, the plant configuration, the rated power outcome of the PD, the grid connection configuration, the process used for the production of Methane from renewable energy;.

Within 90 days GSE has to communicate to the registrant if the PD can be qualified or if the application has to be rejected.

GSE proceeds at evaluating the application and, where it needs, asks the registrants to provide further information/documents (see the flow-chart 2).

After the positive evaluation of the request of “Qualifica IGO”, the Producer must follow the following step:

- Registration in the “Area Clienti” of the GSE website (if not already registered for other applications with GSE);
- Access to the “Portale GO” and “Certigy” platform.

Specification on Gas Usage:

For Methane from renewable energy PDs that receive supports the usage of gas is linked to the support scheme. For example: PDs supported by DM 2 March 2018 can be only “Transport” (they cannot change).

Only in the case of Methane from renewable energy PDs that receive supports under the Ministerial Decree 2022, the producers can modify the gas usage by requesting a re-registration, but only if the PD respects the percentage of reduction of GHG emissions.

For PDs not supported by any mechanism, Producers can change the usage of gas asking for a specific month the issuing GAS GOs with another gas usage based on the sustainability information submitted to GSE. In this case is not required a re-registration but GSE will issue GAS GOs on monthly basis based on the information sent by the Producers.

B) RENEWABLE HYDROGEN PRODUCTION PLANTS

For PDs listed in the point B), Producers can make a “Qualifica IGO” request to GSE in order to get EECS GOs. The request can be sent to GSE only after they became operational.

When a Qualifica IGO request is presented, a set of technical data and specific information of the PD must be transmitted. In this case, the PD must produce renewable hydrogen as defined in article 2, paragraph 1, letter n), of the GO Decree.

C) OTHER RENEWABLE GASES production plants

For PDs listed in the point C), in order to get EECS GOs, the Producer must ask to GSE:

1. preliminary verification.

This preliminary request can also be submitted with reference to project production plants, i.e. before entry into operation (still in the planning or construction phase).

This preliminary activity is preparatory to verifying the eligibility of the plants for the release of the Qualifica IGO (to be requested from the GSE exclusively following entry into operation) as well as the evaluation of the type of GO that can be issued (GAS GOs or HYDROGEN GOs).

2. Qualifica IGO request (when the PD has become operational).

For all PDs all data for energy production is available after PD registration.

D.4 De-Registration of a Production Device

This section must demonstrate compliance with the following EECS Rules:

None directly			
---------------	--	--	--

It must describe:

- *How the registrant should request the de-registration*
- *Period of notice required*
- *How the registry operator will respond*
- *How long the process should take*
- *How outstanding charges are applied*
- *Re-registration requirements*

The PD owner must notify GSE of intent to deregister his/her Production Device in writing.

GSE will thus proceed at closing the EECS GOs Account in the EECS GOs Registry.

Data will be stored in the GSE database.

D.5 Maintenance of Production Device Registration Data

This section demonstrates compliance with the following EECS Rules:

C2.2.1	C2.2.2	C2.2.3	C2.2.5	D5.1.2
--------	--------	--------	--------	--------

It must describe:

- *Changes must be notified*
- *The assessment process of changes in production devices and how long it will take*
- *Changes in relation to qualification*
- *How changes in device capacity are handled*

The following section(s) must be included in a Domain Protocol.

- D.5.1 The registration of a Production Device expires after five years. Moreover, it can be renewed in case the Producer confirms to GSE all data regarding a registered PD at the end of this five-year period and in case significant modifications on the PD occur within the period.
- D.5.2 The plant operator must notify GSE without any delay, in writing of any changes related to PDs (e.g. property changes, enhancement etc.). GSE will evaluate whether such changes have impact on the maintenance of PD registration criteria and amends the EECS GOs Registry accordingly, without delay.
GSE assesses the changes in order to verify the maintenance of the requirements of the registration and, if the requirements are no longer met, the GSE communicates to the PD owner the revocation of the PD’s qualification. GSE keeps all records of the communications with PDs owner regarding the registration of PDs.
- D.5.3 Where the capacity of a PD increases for any reason, such additional capacity is not registered as a separate element of the relevant PD but by updating PD capacity. Nevertheless, GSE keeps all records of the communications with PD’s owner (including documentation) regarding the registration of PDs and the changes occurring in the qualification data. This means that the EECS GOs Registry keeps the information on when and how the changes were made.
- D.5.4 GSE notifies the AIB in case material errors are detected in Production Device data.

D.6 Audit of Registered Production Devices

This section demonstrates compliance with the following EECS Rules:

E3.3.7	E3.3.8	D5.1.2	
--------	--------	--------	--

It must describe:

- *Access to site and records is essential*
- *Site visits can be without notice*
- *What site visits are for*
- *Any available alternatives to site inspections*

The following section(s) must be included in a Domain Protocol.

- D.6.1 Validity of data provided when a GO request is presented by the PD owner is ensured as follows:
- Import Meter measurements of both electricity and gas are verified by the same body that verifies the Export Meter and in the same way.
 - For Entry Measurements (input data), the PD first obtains certification from the relevant Certification Bodies for the use of specific biomass input (quantity, type); thereafter, these Certification Bodies are obliged to conduct inspections on a yearly basis as requested by national Legislation (Decreto Sostenibilità 14/11/2019 - art. 7.3) and provide declarations of

biomass use to the relevant Authorities (local, regional, national levels depending on the Italian region in which the PD is located);

- Regarding Export Meter measurements (output data), production declared by the PD owner is validated by the grid operator. For electricity, a single grid operator, Terna, is legally competent in Italy. For gases different operators with different responsibilities are active, depending on the transport and distribution configuration and on the Italian region in which the PD is located.

Moreover, GSE mandates further inspections, whether documentary or on-site, focused on all years between the start of production of a PD and the date of the inspection.

- D.6.2 PD inspections are determined on an annual basis based on different criteria (technical, economic, specific for each support scheme).
- D.6.3 Production audits are performed on a random basis by GSE. GSE conducts audits of production devices with a priority to plants that also receive some kind of support, especially the all-inclusive feed in tariff. Such plants are often qualified for EECS GOs too; therefore, they are checked for this as well.
- D.6.4 GSE conducts audits and inspections with internal resources and/or with the support of external organisations and companies.
 - D.6.4.1 GSE's Investigation and Inspection Department has 2 operational units: PV and RES power plants – HEC and energy efficiency.
 - D.6.4.2 GSE works closely together with the VAT Authority (Guardia di Finanza) that has an office in GSE's building.
 - D.6.4.3 GSE exchanges information also with the Police for performing on-site inspections of production devices.
- D.6.5 The aim of audits is
 - To verify data regarding energy produced;
 - To verify the veracity of information provided during the qualification process, among which the configuration of the plant systems and the way in which the plant is connected to the power grid;
 - To verify the Production Device continues to meet qualification criteria;
 - To verify that all needed authorizations have been granted with regard to the relevant PD ;
 - To audit measuring instruments.

- D.6.6 In case of on-site inspections, the relevant PD owner is informed minimum 7 days in advance about the coming inspection. GSE requires the legal representative to be present and he/her must ensure that the inspection can be performed in safety and healthy. At GSE discretion, inspections may be carried out without notice.
- D.6.7 Refusal to permit access to a Production Device may be considered a breach of the Standard Terms and Conditions.
- D.6.8 If anomalies are found a formal letter of default is sent.
- D.6.9 In case of any discrepancy GSE has the right to amend the registry by suspending the relevant PD from the participation within the EECS GOs Registry.
- D.6.10 If an inspection identifies material differences from the details recorded on the EECS Registration Database, the Registrant must re-apply for registration of the Production Device. The results of such an inspection are communicated within the different GO departments in GSE so the EECS GOs Registry can be modified.
- D.6.11 The penalty is to pay back the support that has been granted wrongfully. If EECS GOs were issued wrongly during the previous years, this is compensated with future EECS GOs, but if this is not possible a financial claim is introduced against the PD to give back EECS GOs money (price of the GOs of that year) or stop granting incentives.
- D.6.12 GSE will endeavour to deal with complaints received as soon as possible. Disputes arising out the STC shall be settled according to national law. Any dispute or complaints that cannot be settled amicably are subjected to the exclusive jurisdiction of Rome’s Court.
- D.6.13 The PD owner is held to issue all declarations and/or notifications accompanying or completing the qualification request in accordance with articles 46 and 47 of Decree of the President of the Republic no. 445 of 28 December 2000 and under the procedure set out in art. 38 thereof, i.e. declaring that he/she is aware of the loss of benefits, if any, arising from or of criminal penalties inflicted in case of misrepresentations as per articles 75 and 76 thereof. For the purposes of the EECS GO qualification, GSE verifies whether the PDs conform to the data declared by the PD owner.
- D.6.14 Inspections verify that the Measurement Devices are correctly positioned in order to measure the quantity needed for calculating the amount of EECS Certificates to be Issued.
- D.6.15 Inspections confirm the accuracy of the Measurement Devices involved in the calculation of the amount of EECS Certificates to be issued to be acceptable in accordance with the existing regulatory framework and applicable standards.
- D.6.16 Inspections confirm that the formula for calculating the amount of EECS Certificates correctly reflects the amount of Output that qualifies for the Purpose of these EECS Certificates.

D.7 Registration Error/Exception Handling

This section demonstrates compliance with the following EECS Rules:

C2.2.2	E4.2.7		
--------	--------	--	--

It must describe:

- *How identified changes or errors in registration are handled*
- *Reporting of any non-compliance to the AIB*

The following section(s) must be included in a Domain Protocol.

D.7.1 Any errors in EECS Certificates resulting from an error in the registered data of a Production Device will be handled in accordance with section E.11.

D.7.2 If GSE detects error data is entitled to correct them. An Account Holder must notify GSE without any delay, in writing of any changes occurring, or unplanned changes that have resulted in the information recorded in the EECS Registration Database in relation to the Account Holder becoming inaccurate.

GSE will amend the EECS registration database accordingly, without delay.

GSE assesses the changes in order to verify the maintenance of the requirements of the registration and, if the requirements are no longer met, the GSE communicates to the PD owner the revocation of the PD's qualification. GSE keeps all records of the communications with PDs owner regarding the registration of PDs.

E CERTIFICATE SYSTEMS ADMINISTRATION

Where relevant this section describes separate rules for disclosure of different energy carriers.

E.1 Issuing EECS Certificates

This section demonstrates compliance with the following EECS Rules:

A2.1.1	A2.1.2	C3.1.1	C3.2.1	C3.3.1
C3.4.2	C3.4.4	E3.3.10	N3.1.1	O3.1.1

It must describe the preconditions for EECS issuing:

- *the device must have been registered prior to the first production period*
- *the output must qualify under the product rules*
- *the output must have been metered and independently verified*
- *the relationship of the production period to the issuing date*
 - *the latest date when certificates can be issued*
- *no other certificate for the same purpose is in existence*
- *1 EECS certificate represents 1MWh if relevant whether in low calorific value or high calorific value*
- *any differences for handling of different energy carriers*
- *how a national scheme certificate (if they exist) can be converted to an EECS certificate*
- *any waivers required*
- *Procedures for: the Issue, transfer, and Cancellation of Scheme Certificates; are robust, effective, efficient, and adequate.*

E.1.1 GSE issues EECS GOs according to the following preconditions:

- the production device is registered properly
- the production device is allocated to the account of the owner
- for every production period, the Authorized Measurement Body (grid operators or GSE) reports the amount of produced energy from renewable energies
- the energy was not produced more than twelve (12) months ago.

- E.1.2 The face value of one (1) EECS GO is one (1) MWh of energy produced and injected into the grid.
- E.1.3 No other certificates for disclosure purposes are issued in respect of the same MWh.
- E.1.4 The measurement data received from the grid operators (DSO and TSO) or declared from Producers in case of GAS PDs not connected to the grid, have to be validated by GSE who verifies if such data can be consistent with i.e. MWh expected to be produced by the relevant PD, peak power, etc.
- E.1.5 Where such comparison comes to a positive evaluation, GSE calculates the number of EECS GOs that could be issued.
- E.1.6 Each EECS GOs is issued in respect of the output of PDs, which are registered in the GSE’s Registration Database.
- E.1.7 There is no issuance of EECS GOs if the last day on which the output is generated is more than 13 months after the first day on which the measured output was generated.
- E.1.8 EECS GOs are only issued in respect of the output of PDs, which has been found to be produced from the Input or Inputs claimed by the Registrant of the originating PD and which meets the output criteria for that EECS GOs; and the measured values of which have been collected and determined by the authorized measurement bodies.
- E.1.9 GSE issues EECS GOs since at the earliest January of the year in which the registration is completed, provided data for both Entry and Exit Measurements have been successfully validated as stipulated in D6.1.

E.2 Eligible energy for EECS Certificates

This section demonstrates compliance with the following EECS Rules:

N6.4	O6.4		
------	------	--	--

It shall describe:

- *for which energy are the EECS Certificates issued (e.g. whether for the total quantity produced (gross production, which may include auxiliaries and own use of energy) or for the energy delivered to the grid).*
 - *Whether and how auxiliary energy from other energy carriers is taken into account in the calculation of eligible energy for EECS Certificates*
 - *For gas: If the energy is delivered to the grid, whether auxiliary energy (MWh) from fossil energy sources is deducted*
 - *For gas, which adjustments are done regarding to take into account the calorific value of the gas.*
- E.2.1 For electricity sector, the energy eligible for EECS certificates is the amount of energy defined by the following formulas:
- Dissemination Level 2

Issue = min (Net produced Energy; Energy injected into the grid)

- Formula Autoconsumption (Dissemination Level 1)

Issue = max ((Net produced Energy – Energy injected into the grid); 0)

E.2.2 With reference to renewable gases, the energy eligible for EECS certificates is the energy associated to the measured value of renewable gas, specified by its calorific value, minus the energy consumption attributable to the plant's auxiliary services. The measured value of gas varies depending on the system configurations.

E.3 Processes

This section demonstrates compliance with the following EECS Rules:

A.4	C3.4.1	C3.4.3	C3.5.1	C3.5.2
C3.5.3	C4.1.1	C4.1.3	D7.1.2	E.2
N6.4.	O6.4			

It must describe the processes leading to issue:

- *a request to issue must be made by the registrant*
- *the issuing frequency*
- *how residual kWh are carried/brought forward*
- *certificates can be issued for energy consumed by auxiliaries, but they must be cancelled immediately*
- *certificates will be issued to the nominated account*
- *any differences for handling of different energy carriers*
- *how long the process will take*
- *how the Account Holder is informed of the issue*

The following section(s) must be included in a Domain Protocol.

- E.3.1 The Account Holder of a Transferables Account is treated (as between the Account Holder and that Member) as the owner of the EECS Certificates.
- E.3.2 GSE shall ensure that its manual and automated information systems for the Issue, holding and transfer of EECS Certificates are able to support audit of all transactions with respect to EECS Certificates.
- E.3.3 GSE shall use in connection with its EECS Scheme the EECS Registration Database and Transfer Links approved for the purposes of its EECS Scheme.
- E.3.4 For the Electricity sector, after the validation of the measures by the grid operators (DSO and TSO), it is up to the owner/producer to decide when and how many certificates published on its account he/she wants to be issued. More specifically, the producer can submit an issuing request to GSE via Certigy. The issuing request is required for PDs in the electricity sector, including pumping and hybrid PDs for which GSE asks specific documentation.

The issuing requests for year "n" can be sent no later than the last day of the month preceding the GO expiry date. GSE checks and approves the issuing requests twice a month.

Producer can ask the issuing of PPA GOs (Power Purchase Agreement GOs) by stipulating, under the Presidential Decree 445/2000, that he has signed a PPA contract with a counterparty. If the counterparty to the PPA is a Final User, the GOs are immediately cancelled on the latter's account. If the counterparty is a Supplier or a Trader, the GOs may be subject to further transfers on the GME or AIB platforms. When the PPA GOs are transferred on the GME or AIB platform, the tag PPA is lost. The internal transfer of PPA GOs from the Producer to the counterparty takes place through a specific functionality present on the Certigy platform. Through this functionality, the Producer declares, pursuant to Presidential Decree 445/2000, to have a PPA contract in place by communicating the property account number of the PPA counterparty and the number of PPA GOs to be transferred.

Article 31(3) of the Ministerial Decree of 6th July 2012 and confirmed by Decree GO states that in relation to renewable production devices which:

- a) benefit from the "simplified purchase and resale arrangements"; or
- b) benefit from "net metering"; or
- c) benefit from feed-in tariffs,
- d) benefit of a subsidy scheme for production of electricity from renewable energy sources, defined by the terms of national legislation (Decree n. 199 of November 8th 2021) which does not take into account the market value of GOs,

GSE issues and automatically transfers to its own account (free of charge) GOs related to the corresponding electricity produced and injected into the grid.

Such GOs are allocated to market operators through 5 auction sessions per year. According to article 6(4) of the Energy Regulator Resolution N. 104/11 (Italian only) the revenues of these auctions are used to decrease the share of the RES-support cost paid by the final consumer (so called component ASOS on the electricity invoice).

Regarding production devices with rated output < 50 kW and which are included in one of the categories listed above, GSE issues GOs based on the production of electricity with an aggregated

value of a virtual PD, resulting as the total production rated output of all PDs included in the same market zone. For these GOs, within the guidelines of article 17 comma 1 of the Ministerial Decree 224 of 14 July 2023, criteria are defined according to which the minimum information found in article 4 comma 5 of the Ministerial Decree 224 of 14 July 2023 can be reported in aggregate form.

E.3.5 For the other sectors, GSE issues GOs directly on the producers' account in the Certigy platform, without an issuing request by the producer.

GSE can issue GAS GOs for Methane from renewable energy sales contracts between a Producer and a Final User pursuant to art. 11, paragraph 5, letter b), of the Ministerial Decree 224 of the 14 July 2023. More specifically, the Producer, after the issuing of the GAS GOs on its account, can transfer the GAS GOs to the Account of the Final User. The counterparty receives a notification from the IT system and can approve or reject the transfer: in case of approval, the GOs are deposited to his account and are immediately cancelled.

After the issuing on the nominated account, Certigy informs the Producers that the issuing has been done through a system of notifications.

E.3.5.1 Article 13 of the GO Decree states that GSE issues and automatically transfers to its own account (free of charge) GOs related to the corresponding production of renewable gas or renewable hydrogen which is supported by a mechanism which does not take into account the market value of a GO.

E.3.5.2 Referring to Methane from renewable energy production plants, GOs are issued and automatically transferred to its own account (free of charge) if one of the following scenarios occur:

- a) the Production Device is under the support mechanism by means of the Ministerial Decree 15th of September 2022, and the producer receives the all-inclusive tariff;
- b) the Production Device is under the support mechanism by means of the Ministerial Decree 2nd of March 2018 referred only to transport sector;

Such GOs are allocated to market operators through 5 auction sessions per year, in the **same days** as GO auctions for the electricity sector.

E.3.5.3 The transport GAS GOs (Ministerial Decree 2nd of March 2018), until the end of the thermal season 2022-2023, are assigned directly by GSE to the shippers which receive the Methane from renewable energy supported under article 6 comma 2 of the Ministerial Decree 2nd of March 2018, within the procedures carried out for the sales process of Methane from renewable energy. This transitory arrangement defined by the Decree will be applicable until 2024 when gas auctions start regularly.

E.3.6 The residual kWh is historized and carried over to the following issuing.

E.3.7 Certificates cannot be issued for energy consumed by auxiliaries.

E.3.7.1 In case of pumping storages and hybrid power plants:

Producers are asked to send to GSE a consumption declaration (Annex 4) filled in and signed by the responsible person. GSE has thus 30 days to evaluate such documents and approve or rectify the number of EECS GOs asked to be issued.

In particular, the amount of EECS GOs to be issued for electricity produced by **hydro power plants with pumping** is determined by deducting electricity consumed by pumping from the amount of electricity produced and injected into the grid.

E.3.7.2 In case of **hybrid power plants**, the amount of output determined for the issuing of EECS GOs is the amount of electricity produced and injected into the grid multiplied by the energy input factor calculated as follows:

$$L = (M^{\text{RES}} \times C^{\text{RES}}) / (M^{\text{RES}} \times C^{\text{RES}}) \dots + (M^n \times C^n)$$

where:

M^{RES} is the mass of RES sources used by the relevant Production Device during the relevant period

C^{RES} is the average calorific value of the relevant RES source used by the relevant Production Device during the relevant period

M^n is the mass of each relevant Input other than RES for that Production Device during the relevant period

C^n is the average calorific value of each relevant Input other than RES for that Production Device during the relevant period.

E.3.7.3 In case auxiliary energy would be metered on a separate connection point, the energy consumption of auxiliary services will be deducted from the gross metering of electricity injected into the grid. In order to avoid issuing too many EECS GOs a correction factor is applied.

The correction factor is determined during the qualification process of the involved PD and can be revised periodically. This correction factor is calculated on the basis of the data provided by the PD owner, such as the power of the machines of the auxiliary services and the utilization factor of the machines.

Before the expiration of EECS GOs GSE will apply the above-mentioned correction factor by rectifying the number of EECS GOs issued for those PDs.

E.3.8 For **Hydro PD**, the following further monthly data needs to be sent to GSE:

- the pumping consumptions (kWh)
- pumping cycle efficiency
- gross electricity produced by pumping (kWh)
- total gross energy produced (kWh)
- % of pumping production

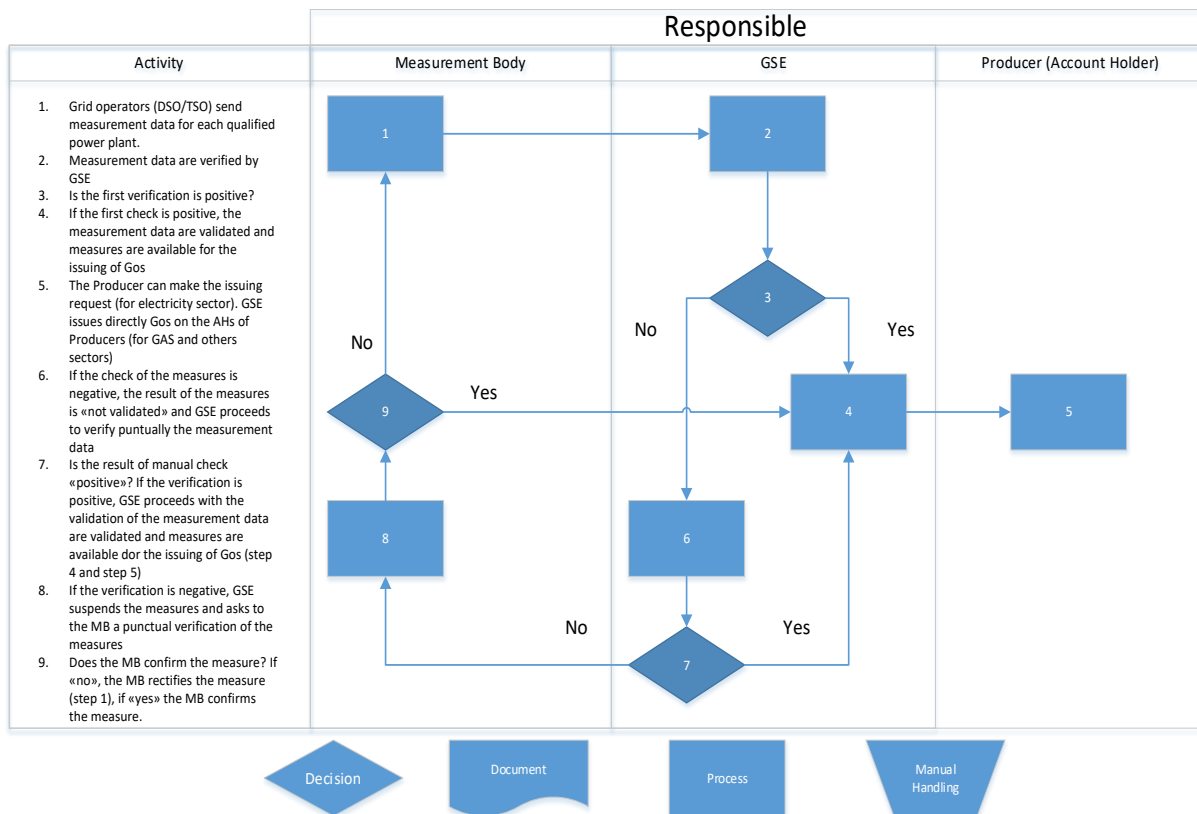
E.3.9 For **hybrid PD**, the following further monthly data needs to be sent to GSE:

- information regarding the use of each combustible used and the related characteristics (e.g. lower calorific value, plant efficiency, etc.)
- % energy produced by Renewable sources
- energy produced by RES.

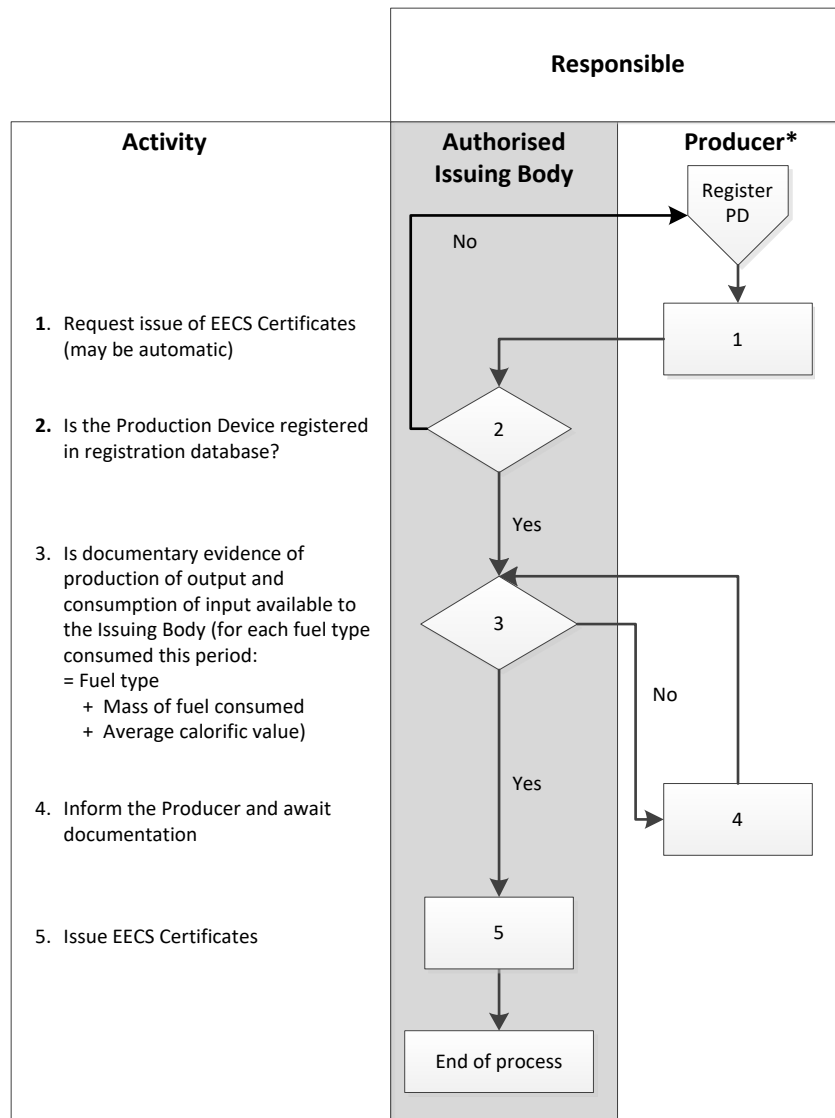
E.3.10 GSE is the sole competent body responsible in Italy for the issuing of electricity, gas, hydrogen and heating and cooling GOs.

This prevents any possible situation of double counting that could intervene for the certificates issued for production of certified and previously successfully registered PDs.

Flow-chart 3: Description of issuing process regarding all RES power plants except the Hybrid power plants and the Hydro power plants with pumping storages which follow the second flow-chart



Flow-chart 4: Description of issuing process regarding Hybrid power plants and Hydro power plants with pumping storages



* The Producer is the generic term for the party which requests certificates, and might include production aggregators, portfolio managers etc.

E.4 Measurement

This section demonstrates compliance with the following EECS Rules:

D6.1.2	N6.4.	O6.4	
--------	-------	------	--

It must describe:

- the local metering regulations that apply
- measurement frequency must be not more than 12 months

- *the registrant is responsible for the measurement data*
- *a measurement body must collect and verify the values*
- *the allocation of energy according to input fuel*
- *the determination of qualifying output*
- *any differences for handling of different energy carriers*
- *when a device is out of service, its consumption is not counted*
- *any arrangements for estimating and/or line loss adjustments to metered values*

E.4.1 Electricity sector:

E.4.1.1 For IGO qualified plants, the GSE makes available on the Certigy platform, on a monthly basis, the measurements of electricity produced and injected sent by the grid operators responsible for collecting measurement data related to the electricity produced by the PD. Based on the configuration of the production plant, the GOs indicate whether the electricity is consumed on site or whether it is fed into the grid. In this last case, the GO contains a specific indication of the type of the grid: Transferred over a Distribution or Transmission System, Transferred over a Closed Distribution System, or Transferred over any other network than a Distribution or Transmission System or Closed Distribution System (as: historic cooperatives or the new cooperatives referred to in).

Dissemination Level (DL)	Type of PD
DL 1	Consumed by the operator of the production device
DL 2	Transferred over a Distribution or Transmission System
DL 1; DL 2	Combination of DL1 + DL2
DL 3	Transferred over a Closed Distribution System
DL 4	Transferred over any other network than a Distribution or Transmission System or Closed Distribution System

On the basis of the various configurations referred to the table above, the electricity production plants from renewable sources must be equipped with suitable meters that allows the measurement of the gross production and the electricity fed into the grid. Consumption attributable to auxiliary services, losses in the main transformers and line losses up to the point of energy delivery to the electricity grid are quantified according to the values established by the [Annex 4 of the Ministerial Decree 6 July 2012](#).

For PDs with a capacity lower than 1 MW, a fixed percentage of auxiliaries energy consumption is determined by default based on each technology (see the paragraph “2.1.5. SERVIZI AUSILIARI” of the “Application Rules”).

For PDs with a capacity higher than 1 MW, Producers can ask to GSE the reevaluation of the auxiliaries, determined by the specific meterID.

E.4.1.2 The energy consumed by auxiliaries, if calculated, is determined by measurements provided by the Producers for a specific period of time (1st year of measurement). Afterwards, the calculated value is applied for future years with no additional measurements needed.

E.4.1.3 GSE acquires the following measurement data on a monthly basis from the grid operators responsible for the measurement service, depending on the different DL:

- energy produced
- energy injected into the grid.

E.4.1.4 The measurement will be transmitted by the grid operators on a monthly basis by the 15th of the month m+1 following the relevant month m. There is also the possibility of receiving corrections of measures by the grid operators acceptable only within the time of validity of the GO.

For plants with an incentive contract, the GSE will use the same measurements, transmitted by the grid operators in reference to such contracts by the 15th of the month following the reference month.

In the absence of the measurement value transmitted by the grid operators it will not be possible to proceed with the issuing request.

E.4.2 Gas sector:

E.4.2.1 In relation to Methane from renewable energy PDs, the transmission of the measurements useful for calculating the GAS GOs depends on the plant configuration.

Measurement data are transmitted by the grid operators when:

- Methane from renewable energy PD with obligation of connection to the grid
- Methane from renewable energy PD with obligation of connection to the grid by means of tank wagons

Measurement data are declared by the Producers and verified by GSE when:

- Methane from renewable energy PD with self-consumption
- Methane from renewable energy PD with connection only to tank wagons
- Methane from renewable energy PD with direct connection liquefaction plants

For Hydrogen and thermal sector, there are currently no PDs and therefore no measurements. However, a similar structure as the gas sector will be implemented.

E.4.2.2 In order to calculate the net energy associated with the gas produced for the issuing of GAS GOs, during the Qualifica IGO evaluation process, a flat rate value associated with the consumption of auxiliary services (%SA factor) is determined by the GSE.

This factor, expressed in percentage of gross production, is representative of the share of energy absorption of the auxiliary services of the production plant.

E.4.2.3 For Methane from renewable energy production plants receiving public supports (PDs listed in the point Ai.), the %SA factor is defined during the evaluation investigation aimed at accessing the incentives. For these kinds of Methane from renewable energy production

plants (PDs receiving incentives according to Ministerial Decree 2018 and to Ministerial Decree 2022), net energy production, entitled to the issuance of EECS GOs, coincides with incentivized energy amount.

E.4.2.4 For PDs listed in the points Aii.), B) and C), i.e. Methane from renewable energy production plants not receiving any supports, renewable hydrogen production plants and other renewable gases production plants, the %SA factor is defined during the “Qualifica IGO” evaluation process. In this case, when requesting Qualifica IGO, the Producer must indicate the method for determining the value of %SA (default flat rate value or value based on measurements made).

E.4.2.5 For more details of methodology calculation, see the document “Regole Applicative”.

E.5 Energy Storage

This section demonstrates compliance with the following EECS Rules:

N6.4.4	N6.4.5	C3.2.4	C3.2.2	C3.6
--------	--------	--------	--------	------

It must describe how the nett generation is calculated:

- *the registrant must provide a consumption declaration*

A sample or template consumption declaration form must be included as an appendix to ensure correct data provision.

It must describe rules for handling certificates in relation with stored energy, e.g.:

- No certificates are issued for the Output of an energy storage device; or*
- certificates are only issued for the Output of an energy storage device if it is assured the energy that flows into the storage device is produced on the same site and no certificates have been issued for the energy that flows into the storage device; or*
- certificates are cancelled for Input into storage and certificates issued are for the Output from storage.*

It must include the handling of pump storage and energy losses over storage in general. It also explains the rules for the allocation of attributes of input into storage-to-storage output.

Concerning energy storage, the necessary information in order to determine the electricity with energy storage systems eligible for GOs is specified in the document “Regole tecniche per l’attuazione delle disposizioni relative all’integrazione di sistemi di accumulo di energia elettrica nel sistema elettrico nazionale”¹

In Italian domain GOs are not cancelled for storage.

¹ [https://www.gse.it/documenti_site/Documenti GSE/Servizi per te/SISTEMI DI ACCUMULO/regole e procedure/REGOLE TECNICHE SISTEMI ACCUMULO.PDF](https://www.gse.it/documenti_site/Documenti%20GSE/Servizi%20per%20te/SISTEMI%20DI%20ACCUMULO/regole%20e%20procedure/REGOLE%20TECNICHE%20SISTEMI%20ACCUMULO.PDF)

GOs are issued after storage period when energy is injected into the grid. However, these GOs refer to original energy production of the PD.

The validity of GOs issued after storage is 12 months from the production period.

Regarding pumping storage, pumping consumptions are declared every month by the Producer and this consumption is deducted for GO issuing.

E.6 Energy Carrier Conversion

This section demonstrates compliance with the following EECS Rules:

C3.2.2	C3.5.4(u)	C3.6	
--------	-----------	------	--

It must describe rules for EECS Certificate Conversion (Conversion Issuance)

The following areas must be elaborated in a Domain Protocol:

- *Are GOs cancelled for the measured input into conversion and new GOs issued for the measured output from conversion?*
- *How the cancelled GOs for the input to conversion are accounted in the statistics and overall disclosure exercise so that they are not double counted in any figures at the usage side.*
- *Does the cancellation process foresee in a mentioning in the cancellation request that the cancellation took place for the purpose of conversion?*
- *Do the newly issued GOs after conversion receive a 'Conversion Tag' in accordance with EECS C3.5.4(u)?*
- *The process that matches the measured input energy to a conversion device with the GOs cancelled for proving the energy source of this input?*
- *The process that transmits data from the cancelled input GOs to the newly issued output GOs? Which data fields are transmitted? How is the proportional allocation from (more) input GOs to (lower number of) output GOs dealt with?*
- *The cancelled GOs for the input into conversion, do they have to be cancelled within your own registry? Or do you accept them to be cancelled elsewhere? Please elaborate on the verification process.*

It is not possible to cancel GOs in order to certify the use of a renewable fuel/vector in an energy conversion process finalized for production of a different energy vector. The only exceptions, specified by national legislation, are:

- the consumption of renewable energy in electrolysis plants for the production of hydrogen, according to the provisions of the Ministerial Decree. 21 September 2022 containing "Conditions for access to concessions on the consumption of renewable energy in electrolysis plants for the production of green hydrogen.";
- the use of Methane from renewable energy in high-efficiency cogeneration plants, as required by Ministerial Decree 2022

Exclusively in such cases, the cancellation of the GOs relating to the fuel/carrier entering the conversion plant and the consequent issuing of the GOs relating to the produced carrier is permissible.

E.7 Combustion Fuel (e.g., Biomass) Input and Production Devices with multiple energy inputs

This section demonstrates compliance with the following EECS Rules:

N6.3.2	O6.3.2		
--------	--------	--	--

It must describe how the generation is calculated for Production Devices using combustion fuels or multiple fuels as Input:

- *the registrant must provide a consumption declaration*
- *the standard calculation must be applied*
- *any differences in relation with issuing certificates for different energy carriers*

A sample or template consumption declaration form must be included as an appendix to ensure correct data provision.

All information are present in the paragraph E3. Data required are on the template of the Annex 4.

E.8 Format

This section demonstrates compliance with the following EECS Rules:

C3.5.4	C3.5.5	N6.5.	N6.6	O7
O8	C3.4.4	E3.3.10	N3.1.1	O3.1.1

It must describe:

- *the format of an EECS certificate (it is recommended to use the section given below to avoid a complete listing of items)*
- *where this **optional** data is filled in:*
 - *CO2 emissions, a reference to the methodology for determining this value*
 - *radioactive waste, and a reference to the methodology for determining this value*
- *for cogeneration additional data items to be included:*
 - *CO2 emissions*
 - *the use of heat*
 - *the calorific value*
 - *the primary energy savings*
-

- *it shall be clarified whether there is data on the GOs on the **optional** fields, clarification whether it is a choice for the producer to record this data on the EECS Certificate or whether this is systematically either or not on the EECS Certificates*
- *the processes for determining the data that is optional on EECS GOs, shall be mentioned here, and the process for verification of the content of this data field, including the identity of the party who fills in this data.*

The following section(s) must be included in a Domain Protocol.

E.8.1 EECS Certificates shall be Issued in such format as may be determined by AIB.

GAS GO are issued in Italy always with the following information:

- GAS Usage
- GHG saving Criteria met
- GHG Emission Produced
- Sustainability Criteria Met
- Sustainability certification body
- Sustainability scheme
- Number of sustainability certificate
- GHG Emission Produced calculation methodology (in accordance with section B4.6.21 GHG emissions of EECS Subsidiary Document 03 HubCom). It is recorded together on gas GO with GHG emission produced.

The gas usage is verified on the basis of the GHG emissions reduction value achieved with the raw materials used (biomass used in the gas production process), in accordance with the minimum sustainability requirements provided for by article 42 of Legislative Decree n. 199/2021 for each gas usage.

Furthermore, Gas GO are issued based on Higher Heating Value.

Input and technology types follow the Fact Sheet “Types of Energy Inputs and Technologies”.

E.8.2 The following information is recorded on the EECS Certificates (in relation with the **optional** fields mentioned in EECS C3.5.5, N6.6, O8, procedures are in place to determine the value recorded on the EECS Certificates):

Subject	Name of data field on EECS Certificate	Present on issued certificates? <i>Yes (always) / No / On Request of Producer</i>	Procedure to determine the value of this data field	Reference in EECS Rules
	Capacity of production element (in addition			C3.5.5 a / O8.1.1

Element of Production Device	to nominal capacity of Production Device)			
	Date operational of production element (in addition to data operational of Production Device)			C3.5.5 a
	Type of production element			C3.5.5 a
Carbon footprint	Quantification of Carbon Footprint (CFP)			C3.5.5 b
	Reference to methodology for determining the CFP			C3.5.5 b
Production Time interval indicators	Starting time when the Output was produced			C3.5.5 c
	End time when the Output was produced			C3.5.5 d
Nuclear energy	Quantification of radioactive waste produced per MWh of Output			C3.5.5 e
	Reference to methodology for determining the radioactive waste produced			C3.5.5 a
Support	Type of support	Yes		C3.5.5 q
Energy Savings [on HEC Certificates]	Amount of primary energy saved in MJ/MWh			N6.6.1 b
	Primary energy savings as % of input and output flows of Cogeneration unit			N6.6.1 b
GHG savings	GHG emissions saved			O8.1.1 b

	Method for GHG savings			08.1.1 c
	RED GHG saving criteria met Y/N			08.1.1 c
Sustainability criteria	Sustainability criteria met Y/N, legislative requirement reference, certification scheme, certification body, reference to certificate(s)/PoS			08.1.1 d
Calorific value	Calorific value for calculating MWh of Output			08.1.1 e
End-use of gas	Category from Fact sheet End-Use of Gas (only if cancellation is restricted to this end-use)			08.1.1 f
Source-shares	Info on the Inputs, their Source Type, their share in total energy Input			08.1.1 g
Pre-conversion support	In case of Conversion Issuance, Indication of public support granted in relation with energy fed into converting Production Device			08.1.1 i
Composition Purity	Indication of the purity of the composition of the Type of Gas			08.1.1 j
Composition criteria	Reference to criteria to which the gas			08.1.1 k

	composition complies			
Advanced Biomass Feedstock	Y/N			08.1.1 I

[Where applicable: Any other information on the EECS Certificates [that is optional in accordance with EECS Rules C3.5.5, N6.6, O8]: [...]]

E.8.3 As the HEC attribute can only be determined the year following production, any GOs issued after the HEC attribute is known is assumed to be similar and will carry the latest information. By doing so, the already issued HEC GOs remain unchanged.

E.9 Transferring EECS Certificates

This section demonstrates compliance with the following EECS Rules:

C5.1.1	C5.1.3	C5.1.6	
--------	--------	--------	--

It must describe the process of transfer (not just whether the process is automated):

- *how the seller initiates a transfer*
 - *making a transfer request*
 - *specifying the certificates to be transferred*
- *validation of a transfer request*
- *when certificates are ‘in transit’ they are not available for another transfer*
- *the certificates ‘leave’ the sender’s account before ‘entering’ the buyer’s account*
- *how imports are handled*
 - *describe the process*
 - *describe whether all EECS Certificates are allowed entrance into the registry, and if not: describe the acceptance criteria for EECS Certificates within your Domain*
 - *describe which information of EECS Certificates is not shown to Account Holders in your registry*
- *how exports are handled (describe the process) and whether all EECS Certificates may be exported out of the registry*
- *how the buyer/seller is made aware of the successful transfer*
- *how long each stage of the process will take*
- *listing for which energy carriers and which certificate types import and export over the AIB Hub is facilitated. These can be the same or more energy carriers and certificate*

products as the ones for which certificates are issued by the Issuing Body as displayed in section B above.

- E.9.1 The transfer between the selling and buying accounts is automated on the basis of a bilateral agreement and negotiation between the selling account holder and the buying one.
- E.9.2 Any transferring of EECS GOs within the Italian system can only occur on the GOs Platforms (PB GOs and GOs Exchange Platform) both managed by the Energy Market Operator -GME- (see also [B.3.1 and Technical rules PB-GO/M-GO](#) on the web site of GME).
 - E.9.2.1 Bilateral Contracts Platform (PB GOs) is dedicated to the registration of any bilateral contract in terms of quantity and price. The registration in PB GO is voluntary.
 - E.9.2.2 Participants in the PB-GO must have at least one account in GSE’s EECS GOs Registry.
- E.9.3 For the purposes of the transfer of ownership of the EECS GOs registered in the PB- GO, GME shall notify GSE of the conclusion of the related transaction so that GSE shall register it in the EECS GOs Registry. To operate in the GOs Exchange Platform (M-GO), participants must have at least one account in GSE’s EECS GOs Registry.
- E.9.4 When an account holder participates to a EECS GO market session as a seller, he/she offers the involved number of EECS GOs held on his/her own account that he/she intends to sell specifying or not any price limit.
The price is per MWh. The price may have the following values:
 - With price limit: the specified price is the lower limit for sell orders and the upper limit for buy orders at which the matching is done;
 - Market price (i.e. without price limit): the orders are matched with the best orders of opposite sign entered into the order book.
- E.9.5 In case of M-GO, the buyer is anonymous and GME acts as a central counterparty, guaranteeing the payment of transaction.
- E.9.6 Market sessions usually take place on a monthly basis.
- E.9.7 At the end of each market session, GME shall notify GSE of the conclusion of the related transactions so that GSE shall register it in the EECS GOs Registry.
- E.9.8 National GO transfers automatically take place based on the outcome of the market platforms.

E.10 Rules for EECS Certificates for export and import

This section demonstrates compliance with the following EECS Rules:

--	--	--	--

Where relevant this section describes separate rules and restrictions for export and import of EECS Certificates.

- *For which energy carriers (electricity, energy gas, hydrogen) and, for gas, which types of gas, Certificates are allowed to be imported or exported*
- *whether there are restrictions on export/ imports in relation with certain conditions (e.g if public support has been/is provided for energy production, depending on the determination of eligible energy for Certificates, dissemination level, EECS Products or other)*

The import/export of EECS GOs occur only via the AIB's Hub. If the transfer refers to:

- an import of EECS GOs imported into the Italian EECS Registry from one of other AIB HUB connected registry or,
- an export of EECS GOs from the Italian EECS Registry to one of other AIB HUB connected registry,

the transfer between the selling and buying accounts is automated on the basis of a bilateral agreement and negotiation between the selling account holder and the buying one.

Where GSE receives a Transfer Request with respect to one or more EECS GOs held in a Transferables Account on its EECS GOs Registry, GSE shall, having confirmed that the Transfer Request is valid:

- remove from that Transferables Account the details of the EECS GOs specified in the Transfer Request;
- where the Transferee's Transferables Account specified in the Transfer Request is in its own EECS GOs Registry:
 - include the full details of the EECS GOs in the Transferee's Transferables Account;
 - confirm to the Transferor that transaction is completed, specifying all the information related to that transaction, such as the date, the number of EECS GOs, the identity of the recipient.

Where the Transferee's Transferables Account specified in the Transfer Request is on another Member's EECS Registration Database, GSE shall:

- send the full details of the EECS Certificates to that other Member's EECS Registration Database;
- record on its own EECS GOs Registry, the export of such EECS Certificates; and
- confirm that the transaction is completed;
- handle EECS Certificates in the accounts.

Where GSE is notified by another Scheme Member of a Transfer Request it shall:

- insert the full details of that EECS Certificates in that Transferables Account;
- confirm to the Member that notified it of such Transfer Request that the transfer of that EECS Certificate has been completed.
- confirm, to the Transferee, that transaction is completed, specifying all the information related to that transaction , such as the date, the number of EECS certificates, the identity of the transferor.

An Import must be accepted or rejected by the counterparty.

GAS GOS transport and other uses, pursuant to Ministerial Decree 2018 and pursuant to Ministerial Decree 2022, cannot be exported.

GAS GOS transport and other uses, not supported by any support mechanism, can be exported.

GAS GOs for production of electricity can be always exported.

E.11 Administration of Malfunctions, Corrections and Errors

This section demonstrates compliance with the following EECS Rules:

C5.1.7	C8.4.1	C8.4.2	C8.4.3	C8.5.1
D9.1.2				

It must describe the processes followed when a transfer fails and when an error is identified:

- *in the event of a failure of minor validation during transfer*
 - *the registry operator will make reasonable effort to correct and make the transfer happen*
- *in the event of a complete failure of a transfer*
 - *reinstate the certificates in the seller's account*
 - *investigate to facilitate another attempt*
- *in the event of impossible transfer for technical reasons*
 - *ex-domain cancellation if appropriate*
- *the registry operator will co-operate with others to manage any errors*
- *where an obvious error has occurred and is agreed*
 - *the registry operator will correct it even if it was not the issuer*
 - *nobody should gain financially as the result of a correction*
- *a registry operator can recover its reasonable costs of corrective action (unless it was responsible for the error)*

The following section(s) must be included in a Domain Protocol.

E.11.1 Intangibility

E.11.1.1 Once issued, the details of an EECS Certificate cannot be altered or deleted except to correct an error.

E.11.2 Corrections

E.11.2.1 Where an error is introduced (subsequent to its Issue) into, or with respect to, an EECS GOs held in an Account Holder's Account in a GSE's EECS GOs Registry:

- a) in the course of its Transfer into that Account; or
- b) during such time as it is in such Account,

GSE shall correct the error in or with respect to that EECS GOs, provided that such EECS GOs has not been transferred out of that Transferables Account.

E.11.2.2 GSE corrects error in an EECS Certificate held in its EECS GOs Registry prior to its transfer into the Account in which it is held at such time, providing that:

- a) the Account Holder has agreed to such alteration;
- b) any unjust enrichment will not happen.

E.11.2.3 In case the EECS GOs are no longer in the Italian domain, GSE will cooperate with other Issuing Bodies to withdraw the erroneous EECS Certificates.

E.11.3 Error Prevention

E.11.3.1 To prevent the double counting on exporting EECS Certificates in case of uncompleted transaction, GSE stops the export of EECS GOs changing the status of certificate to forbid any other kind of action.

E.11.3.2 With regard to avoiding double counting due to timeouts while receiving answer to an export GSE contacts (or is contacted by) the HUB Super User and describes him the situation on its EECS GOs Registry, that is if the status of EECS GOs is “exported” or “not exported”.

E.11.4 Rectificative and Corrective Measures

E.11.4.1 GSE can compensate, if needed, the number of EECS GOs issued in relation to “n” production year, on the basis of any rectification of measurement data eventually received by grid operators.

E.11.4.2 If the number of EECS GOs issued exceeds those that could have to be issued, the related amount will be taken into consideration the following months by issuing fewer EECS GOs than those to be issued in relation to year “n+1” production.

E.11.4.3 In case the number of EECS GOs issued is lower than the number of certificates to be issued, the corresponding remaining number of EECS GOs is thus issued.

E.12 End of Life of EECS Certificates – Cancellation

This section demonstrates compliance with the following EECS Rules:

C5.2.3	C6.1.1	C7.1.1	C7.2.1	C7.2.2
C7.2.3	C7.3.1	E3.3.10	N3.1.1	O3.1.1
C7.1.3				

It must describe:

- *the limitations on what can be cancelled, including that you cannot cancel a certificate that is already cancelled or has expired*
- *how cancelled certificates are prevented from being transferred*
- *the situations where ex-domain cancellations are permitted*
- *what information is in a cancellation request and how that information is provided by the account holder e.g., via a form on a website*

- *the process of cancellation (who does what) including:*
 - *reporting to authorities*
 - *how long the process should take*
- *how multi-product certificates are handled (i.e., certificates for multiple purposes or certificates for both source and technology like renewable HEC GOs)*
- *how a cancellation statement can be obtained for a consumer and how long the production time is likely to be*
- *Which types of certificates are allowed to be cancelled in the Domain*

A sample or template cancellation statement must be included as an appendix.

The following section(s) must be included in a Domain Protocol.

E.12.1 Cancellation is removing a Certificate from circulation. Once Cancelled, a Certificate cannot be moved to any other account, and so is no longer tradable.

E.12.2 Cancellation for both electricity and GAS GOs is for disclosure purposes only.

E.12.3 At cancellation, the Account Holder must indicate the cancellation category. GSE's registry foresees an automatic check whether the end-use category at GO cancellation, coincides with the data field "use of gas" already defined in the issuing phase.

Cancellation of EECS Certificates is allowed for the categories of certificates marked with X in the table below:

Cancellation category	Electricity	Energy Gas	Hydrogen
End-use of energy	X		
End-use of energy in case of autoconsumption	X	X	
End-use of energy in the context of a PPA/ Methane from renewable energy supply contract, when the counterparty is a Final User	X	X	
End-use of energy in case a final user purchase GOs to certify its renewable consumption	X		
Conversion Issuance (EECS C3.2.2 b) in case of end-use of energy in electricity production		X	X
Conversion Issuance (EECS C3.2.2 b) in other cases			
End-use of energy in Transport		X	
End-use of energy in any other use		X	
Storage Issuance (EECS C3.2.4 a.ii)			

E.12.4 Cancellation of EECS Certificates is allowed for the following actors:

Cancellation category	Electricity	Energy Gas	Hydrogen
End-use of energy	Suppliers		
End-use of energy in case of autoconsumption	Automatic	Automatic Methane from renewable energy	
End-use of energy in the context of a PPA/ Methane from renewable energy supply contract when the counterparty is a Final User	Automatic	Automatic	
End-use of energy in case a final user purchase GOs to certify its renewable consumption	Automatic		
Conversion Issuance (EECS C3.2.2 b) in case of end-use of energy in electricity production		Automatic (not yet implemented)	Automatic (not yet implemented)
Conversion Issuance (EECS C3.2.2 b) in other cases			
End-use of energy in Transport		Suppliers Natural Gas Filling Stations	
End-use of energy in any other use		Suppliers	
Storage Issuance (EECS C3.2.4 a.ii)			

E.12.5 Cancellation Process

E.12.5.1 The relevant account holder starts the cancellations process in the EECS GOs Registry.

E.12.5.2 The cancellation of EECS GOs is automated within the EECS GOs Registry after the request of the account holder.

E.12.5.3 The EECS GOs electronic database allows only cancellation of EECS GOs which have not already been cancelled, expired or withdrawn.

E.12.5.4 GSE verifies the cancellation requests. After the approval, the confirmation of the success or failure of a cancellation is notified to the account holder by the EECS GOs registry.

E.12.6 Once an EECS certificate has been cancelled, no further transfer of it is permitted.

E.12.7 If the Account Holder wants to receive the proof of cancellation (Annex 5) he/she applies for it by using the function “download the Cancellation Statement”. The generation of the cancellation statement is only possible after the cancellation has been confirmed. The Account Holder can ask for the cancellation statement right after the completion of the cancellation or later.

E.12.8 Cancellation of GOs are technically blocked in the Italian domain, when:

- The energy source are other than RES;

-
- the country of Issue is Serbia, Switzerland, Montenegro and all countries not connected to the AIB HUB.

E.12.9 For Electricity sector, GOs can be cancelled exclusively by Suppliers.

E.12.10 Automatic cancellation is foreseen for:

- Autoconsumption
- In the context of a PPA, when the counterparty is a Final User
- When final user purchase GOs only to certify their renewable consumption

E.12.11 A GAS GO can be cancelled in Italy only if it has 3 information:

- Compliance with sustainability requirements
- The gas usage of Methane from renewable energy: transport, other uses and electricity production
- the equivalent CO₂ emissions associated with the quantity of Methane from renewable energy certified through GO (GHG Emission Produced).

If a single condition is not respected the GAS GO cannot be cancelled in Italy.

E.12.12 GAS GOs can be cancelled exclusively for the gas usage identified during the issuing phase. If the gas usage is:

- Transport, GAS GOs can be cancelled exclusively by Suppliers and by Natural Gas Filling Station with the indication of the sub-sector: maritime, rail, heavy road transport, light road transport, agricultural vehicles, others.
- Other uses, GAS GOs can be cancelled exclusively by Suppliers with the indication of the sub-sector: Production of heating or cooling, Input to chemical processes, cogeneration.
- Production of electricity, GAS GOs can be cancelled exclusively by Suppliers.

E.12.13 The GAS GOs relating to the Methane from renewable energy self-consumed by the producer are issued and immediately cancelled in favour of the producer himself.

E.12.14 For both energy carriers, the deadline for cancellation is 18 months after the production of the energy unit but no later than march 31st of the year n+2.

E.12.15 Information on conversion and storage will be added in the cancellation statement whenever cancellation statements for conversion or storage will be issued.

E.12.16 For Gas: the relationship with the Union Database and sustainability certification National or Voluntary Schemes in this Domain is as follows: Italy issue GAS GOs always with the information present in the proof of sustainability.

E.12.17 In the Sustainability Certificate, produced by the PD's owner, the following information can be found:

- Certification identification number
- Sustainability Certification Body
- Sustainability Certification Scheme
- Production period

- Type of gas (Methane from renewable energy)
- GHG emissions produced
- Sustainability criteria met (YES/NO) [GHG emission reduction]

All these information are on the Italian GAS GO.

E.13 End of Life of EECS Certificates – Expiry

This section demonstrates compliance with the following EECS Rules:

C5.2.3	C6.1.1c	E6.2.1h	
--------	---------	---------	--

It must describe:

- *what expiry means and if it applies to the EECS Product(s)*
- *the local legislation on expiry*
- *how expiry occurs*
 - *automatic on a set date*
 - *automatic on certificate anniversary*
 - *by transfer (like cancellation)*
 - *by failing validation on transfer*
- *what happens to imports where the certificates have already expired for local use*
 - *imported and automatically expired (not recommended) or*
 - *prevented from import (i.e., fail validation) or*
 - *can be held but not eligible for formal cancellation against an obligation (e.g., Disclosure under a Directive)*

The following section(s) must be included in a Domain Protocol.

Article 4.6 of the GO Decree provided disposition on the validity of GOs. More specifically:

E.13.1 EECS Certificates cease to be valid for transfer twelve months after the end of the period during which the Output to which they relate was produced (no later than 31st March of the 2 following years).

E.13.2 EECS Certificates cease to be valid for cancellation eighteen months after the end of the period during which the Output to which they relate was produced.

E.13.3 EECS Certificates which have expired are no longer valid for transfer and cancellation.

E.14 End of Life of EECS Certificates – Withdrawal

This section must demonstrate compliance with the following EECS Rules:

C5.2.3	C6.1.1	C8.2.1	
--------	--------	--------	--

It must describe:

- *what withdrawal means*
- *the circumstances when withdrawal occurs*
 - *to correct an error*

E.14.1 GSE may withdraw an EECS Certificate held in a Transferable Account on its EECS Registration Database at the request of the Account Holder of that Account, or otherwise in accordance with the provisions of the relevant Product Rules.

To retrieve certificates issued in excess in case of new measurement, inspection, server error, etc. there are 3 possibilities:

- If certificates are still valid and available on the Account of the Producer, GSE will retrieve the certificates issued in excess directly from those available;
- If certificates are still valid but are not available on the Account of the Producer, GSE will deduct the number of certificates issued in excess from the number to be issued during the next issue;
- If certificates are expired, GSE will ask to Producer to pay for the certificates issued in excess by multiplying them by the average price of negotiation established by GME. This solution is valid also in the case of a PD that will get no GOs for the future years.

E.14.2 Certificates which are withdrawn may not be transferred.

F ISSUER’S AGENTS

This section is not required if the roles have been identified and explained in B3.

Production Auditor

Production Registrar

F.1 Production Auditor

This section must demonstrate compliance with the following EECS Rules:

None directly			
---------------	--	--	--

It must describe:

- *the role of the production auditor and in relation to which energy carrier(s)*
- *the production auditor must be approved by the AIB Member*
- *where the schedule of charges for services can be found (if applicable)*

Investigation and Inspection GSE’s Department.

F.2 Production Registrar

This section must demonstrate compliance with the following EECS Rules:

None directly			
---------------	--	--	--

It must describe:

- *the role of the production registrar and in relation to which energy carrier(s)*
- *the production registrar must be approved by the AIB Member*
- *where the schedule of charges for services can be found (if applicable)*

The respective PD's owner or their legal representative.

F.3 Measurement Body(/ies)

This section demonstrates compliance with the following EECS Rules:

H			
---	--	--	--

It must describe:

- *the role of the measurement body and in relation to which energy carrier(s)*
- *the measurement body must be approved by the AIB Member*
- *where the schedule of charges for services can be found (if applicable)*

The respective grid operators of a plant can be found via the web site of the Italian Energy Regulator (Autorità di Regolazione per Energia Reti e Ambiente):

<https://www.arera.it/ModuliDinamiciPortale/elencooperatori/elencoOperatoriHome>

G ACTIVITY REPORTING

G.1 Public Reports

This section demonstrates compliance with the following EECS Rules:

E3.3.4	HPA section 14.2		
--------	------------------	--	--

It must describe how this is about market transparency and include:

- *the market information published*

The following section(s) must be included in a Domain Protocol.

G.1.1 For each technology, statistical information are published on the following website [Home \(plus4u.net\)](#), regarding:

- certificates issued, transferred internally intra-domain, imported, exported, cancelled, expired during each month prior to the current month,
- certificates issued, transferred internally intra-domain, imported, exported, cancelled, expired in relation with the energy produced during each month prior to the current month.

G.2 Record Retention

This section demonstrates compliance with the following EECS Rules:

A12.1.1	C5.1.2	D8.1.2	
---------	--------	--------	--

It must describe how this is about market transparency and include:

- *the type and duration of record retention*

GSE retains records of data in the EECS GOs Registry and also data concerning communication with EECS Market Participants regarding:

- registration of PDs;
- the issue, transfer, and cancellation of EECS GOs.

GSE registry has currently indefinite retention for transaction data.

G.3 Orderly Market Reporting

This section demonstrates compliance with the following EECS Rules:

E4.2.5	E4.2.6	E4.2.7	
--------	--------	--------	--

It must describe how this is about market transparency and include:

- *non-compliance with the Standard Terms*
 - *anti-fraud measures*
 - *anti-competitive behaviour measures*
- *provision of information to the AIB*

GSE will notify other Issuing Bodies as well as the AIB about failures of EECS Market Participants to comply with the law and with the Standard Terms and Condition which could impact on the EECS GOs from this EECS Market Participant.

GSE can forbid any kind of action in an account if there is good reason to suspect that the security, accuracy and reliability of the register are not compliant with the Application Rules of the GOs, with the Standard Terms and Condition and also with the PD's owner declarations and/or notifications accompanying or completing the qualification request in accordance with articles 46 and 47 of Decree of the President of the Republic no. 445 of 28 December 2000 and under the procedure set out in art. 38 thereof, i.e. where he/she have declared that he/she is aware of the loss of benefits, if any, arising from or of criminal penalties inflicted in case of misrepresentations as per articles 75 and 76 thereof. For the purposes of the EECS GOs qualification, GSE verifies whether the PDs conform to the data declared by the PD owner.

GSE will adopt the above action in accordance with the Standard Terms and Conditions which is a literal translation of the English version reviewed in the previous audit.

H ASSOCIATION OF ISSUING BODIES

H.1 Membership

This section demonstrates compliance with the following EECS Rules:

C2.2.6	C2.2.7		
--------	--------	--	--

It must describe:

- *why the AIB membership is important*
- *what the AIB does to maintain a quality system*
 - *independent and peer reviews*
 - *periodic audits*
 - *suspension of issuing and/or international transfers*
- *what happens to device registrations and issuing if membership for an EECS Product ends*
 - *no further issuing*
 - *all devices de-registered*
 - *registry locked*

The following section(s) must be included in a Domain Protocol.

- H.1.1 The Association of Issuing Bodies brings together the issuing bodies of European energy certificate schemes. The AIB promotes the use of a standardised system, based on a harmonised environment, structures and procedures in order to ensure the reliable operation of European energy certificate systems. With its independent and peer reviews, and its periodic audits, the AIB provides a robust framework for reliable and fraud-resistant GO systems. Among others, it can also act by suspending transfers through the Hub. Membership of AIB facilitates mutual recognition of GOs across Europe.
- H.1.2 In case GSE ceases to be a Scheme Member of an EECS Scheme, it shall revise its EECS Registration Database so that every Production Device registered therein ceases to be registered for the purposes of EECS. Certificate issuing under EECS would stop, and EECS GOs would remain tradable only until Expiry.
- H.1.3 In case GSE ceases to be the Authorised Issuing Body for EECS Certificates, it shall revise its EECS Registration Database so that each Production Device in the Domain ceases to be registered for the purposes of EECS Certificates, it shall stop issuing EECS GOs and after a transitional period the registry shall be taken offline.

H.2 Complaints to the AIB

This section must demonstrate compliance with the following EECS Rules:

None directly	(J1.1.2)		
---------------	----------	--	--

It must describe:

- *the ability of account holders to make a complaint to the AIB*
- *the circumstances for a complaint to the AIB*

The following section(s) must be included in a Domain Protocol.

- H.2.1 An Account Holder is allowed to notify the Secretary General of AIB in writing in case:
- an Authorised Issuing Body in relation to an EECS Certificate is in breach of any of the provisions of Product Rules in relation to EECS Certificate; or
 - any Product Rules do not comply with the relevant provisions of the EECS Rules, and evidence is provided substantiating such allegation, and that the Authorised Issuing Body has been given adequate opportunity to respond to such allegation.

The General Secretary of AIB shall invite the relevant Authorised Issuing Body to respond to the allegation.

I CHANGE CONTROL

I.1 Complaints to [EECS Scheme Member]

This section must demonstrate compliance with the following EECS Rules:

None directly			
---------------	--	--	--

It must describe the local complaints procedure:

- *how to make a complaint*
- *how the complaint will be acknowledged*
- *the process for how it might be resolved*
- *how long it might take*

According to article 2 of [Energy Regulator Resolution No. 312/07](#) GSE has to put in place a Customer Service Department (called Contact Center) [Supporto \(gse.it\)](#) that, as regards GOs:

- provides information about GOs regulatory framework
- handles complaints and provide assistance to Market Participants regarding:
 - registration of an account holder;
 - registration of PDs;
 - the Standard Terms and Condition (STC)
 - the issue, transfer, and cancellation of EECS GOs

Since 2013 Contact Center has introduced a “Customer Relationship Management” (CRM) to improve the management of the complaints received through email, phone, Twitter, fax, enhancing the collection of customer information. The CRM also allows to constantly monitor the status of customers' complaints.

GSE will endeavour to deal with complaints received as soon as possible. Disputes arising out the STC shall be settled according to national law. Any dispute or complaints that cannot be settled amicably are subjected to the exclusive jurisdiction of Rome’s Court.

I.2 Disputes

This section must demonstrate compliance with the following EECS Rules:

None directly			
---------------	--	--	--

It must describe:

- *who can raise a dispute*
- *how to raise a dispute*

- *how the dispute will be acknowledged*
- *the process for how it might be resolved*
- *how long it might take*
- *any arbitration ombudsman/appeals process*

If a dispute arises, the Parties shall meet in order to attempt to resolve it in good faith.

If a dispute has not been settled this way, any Party may submit the matter for final and binding resolution to Rome Tribunal.

1.3 Change Requests

This section demonstrates compliance with the following EECS Rules:

E4.2.3	E6.2.1e	L5.1.1	
--------	---------	--------	--

It must describe:

- *any participant can make a change request to the domain protocol or standard terms*
- *the process of the AIB member considering the request*
 - *consultation with other participants in the domain*
- *the process of any changed documentation having to be approved by the AIB*
- *how any revised documentation is notified to participants*

Any modification to the Italian Domain Protocol will depend on changes occurring to the Italian legislative framework regarding GOs.

Whether it happens, GSE makes such modification and propose them for the approval of AIB.

The users may ask GSE to amend the GOs system. If the change request is significant, GSE has to start a consultation with the Ministry of Economic Development and also with other participants in the domain.



ANNEX 1 CONTACTS LIST

AUTHORISED ISSUING BODY/REGISTRY OPERATOR

Company name	Gestore dei Servizi Energetici - GSE
Contact person	Emanuele Del Buono
Department	Head of Management of Renewable support Scheme and Issuing of Renewable Certificates Department
Address	Viale Maresciallo Pilsudski, 92 - 00197 Rome - Italy
Phone number	0680111
E-mail address	emanuele.delbuono@gse.it
Website	www.gse.it

AUTHORISED ISSUING BODY/REGISTRY OPERATOR

Company name	Gestore dei Servizi Energetici - GSE
Contact person	Floriana Furno
Department	Management of Renewable support Scheme and Issuing of Renewable Certificates Department
Address	Viale Maresciallo Pilsudski, 92 - 00197 Rome - Italy
Phone number	0680111
E-mail address	floriana.furno@gse.it
Website	www.gse.it

AUTHORISED ISSUING BODY/REGISTRY OPERATOR

Company name	Gestore dei Servizi Energetici - GSE
Contact person	Gianmarco Piamonti
Department	Inspections Department
Address	Viale Maresciallo Pilsudski, 92 - 00197 Rome - Italy
Phone number	0680111
E-mail address	gianmarco.piamonti@gse.it
Website	www.gse.it

Company name GESTORE DEI SERVIZI ENERGETICI - GSE

Contact person	Marta Grassilli
Department	IT Department
Address	Viale Maresciallo Pilsudski, 92 - 00197 Rome - Italy
Phone number	00390680114174
E-mail address	marta.grassilli@gse.it
Website	www.gse.it

COMPETENT AUTHORITY (IF DIFFERENT FROM THE AUTHORISED ISSUING BODY)

Company name	
Contact person	
Department	
Address	
Phone number	
E-mail address	
Website	

REGISTRY SUPPORT

Company name	Unicorn Systems
Contact person	
Department	
Address	
Phone number	
E-mail address	
Website	

NGC SCHEME OPERATOR

Company name	
Contact person	
Department	
Address	
Phone number	
E-mail address	
Website	

PRODUCTION REGISTRARS

Company name	
Contact person	
Department	
Address	
Phone number	
E-mail address	
Website	

PRODUCTION AUDITORS

Company name	
Contact person	

Department	
Address	
Phone number	
E-mail address	
Website	

MEASUREMENT BODIES

Website	For all sectors: https://www.arera.it/area-operatori/ricerca-operatori Latest for Electricity: https://www.arera.it/allegati/docs/19/568-19allb.pdf
----------------	---

COMPETENT AUTHORITY FOR SUPERVISION OF DISCLOSURE OF THE ORIGIN OF ENERGY

Company name	Gestore dei Servizi Energetici - GSE
Contact person	Floriana Furno
Department	Management of Renewable support Scheme and Issuing of Renewable Certificates Department
Address	Viale Maresciallo Pilsudski, 92 - 00197 Rome - Italy
Phone number	0680111
E-mail address	floriana.furno@gse.it
Website	www.gse.it

[OTHER]

Company name	
Contact person	
Department	
Address	
Phone number	
E-mail address	
Website	

ANNEX 2 ACCOUNT APPLICATION/AMENDMENT FORM

Insert a sample of the form here.

The Account Application Form can be found on the GSE website: [Area clienti GSE](#)

Area Clienti - Registrazione utente

1 Privacy 2 Inserisci i tuoi dati 3 Conferma

Inserisci i tuoi dati

NOME* COGNOME*

CODICE FISCALE* Selezionare solo se il codice fiscale inserito non è italiano

E-MAIL* CONFERMA E-MAIL*

PREFISSO INTERNAZIONALE CELLULARE

CONFERMA PREFISSO INTERNAZIONALE CONFERMA CELLULARE

Condizioni d'uso

Le credenziali di accesso ai portali del GSE sono strettamente personali. E' vietata la cessione a terzi, a qualsiasi titolo, delle suddette credenziali. Rimane consentita la possibilita' di avvalersi del c.d. codice identificativo unico per associare nuovi utenti (debitamente identificati) al profilo di uno stesso operatore. L'utente e' tenuto a custodire con cura e mantenere riservato le proprie credenziali, adottando ogni adeguata misura di cautela. L'inappropriato utilizzo delle credenziali di accesso da parte dell'utente determina responsabilita' unicamente in capo allo stesso. L'utente rimane l'unico soggetto responsabile dell'legittimo utilizzo delle sue credenziali da parte di terzi. Qualora l'utente abbia il fondato timore che UserId e password relative al proprio account siano state sottratte ha il dovere di comunicarlo tempestivamente al Contact Center del GSE, al fine di chiederne la disattivazione. Nessuna responsabilita' puo' essere attribuita al GSE per gli utilizzi impropri che l'utente faccia delle proprie credenziali ovvero per gli accessi illegittimi effettuati da soggetto terzi, qualora tali fatti siano attribuibili ad una condotta scarsamente diligente dell'utente.

Accetto

Non sono un robot

Area Clienti - Registrazione utente

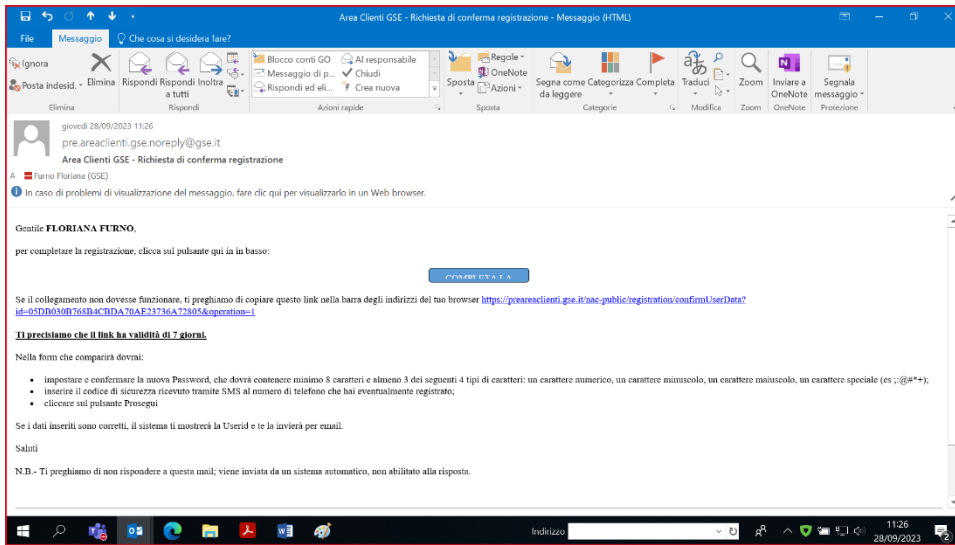
1 Privacy 2 Inserisci i tuoi dati 3 Conferma

Conferma i tuoi dati

NOME FLORIANA	COGNOME FURNO	CODICE FISCALE <input type="text"/>
DATA DI NASCITA <input type="text"/>	SESSO F	NAZIONE ITALIA
LOCALITÀ DI NASCITA ROMA (RM)	E-MAIL FLORIANA.FURNO@GSE.IT	CELLULARE +393489999999

Area Clienti - Registrazione utente

A breve riceverai una e-mail con le istruzioni per completare la registrazione.



Area Clienti - Registrazione utente

NUOVA PASSWORD*

La password dovrà contenere minimo 8 caratteri e almeno 3 dei seguenti caratteri: una lettera maiuscola, una lettera minuscola, un numero, un carattere speciale (es. ;@#+)*

CONFERMA PASSWORD*

Per ricevere via SMS un nuovo codice di sicurezza clicca qui

CODICE DI SICUREZZA*

Condizioni d'uso

Le credenziali di accesso ai portali del GSE sono strettamente personali. E' vietata la cessione a terzi, a qualsiasi titolo, delle suddette credenziali. Rimane consentita la possibilità di avvalersi del c.d. codice identificativo unico per associare nuovi utenti (debitamente identificati) al profilo di uno stesso operatore. L'utente e' tenuto a custodire con cura e mantenere riservate le proprie credenziali, adottando ogni adeguata misura di cautela. L'inappropriato utilizzo delle credenziali di accesso da parte dell'utente determina responsabilita' unicamente in capo allo stesso. L'utente rimane l'unico soggetto responsabile dell'illegittimo utilizzo delle sue credenziali da parte di terzi. Qualora l'utente abbia il fondato timore che UserId e password relative al proprio account siano state sottratte ha il dovere di comunicarlo tempestivamente al Contact Center del GSE, al fine di chiederne la disattivazione. Nessuna responsabilita' puo' essere attribuita al GSE per gli utilizzi impropri che l'utente faccia delle proprie credenziali ovvero per gli accessi illegittimi effettuati da soggetti terzi, qualora tali fatti siano attribuibili ad una condotta scarsamente diligente dell'utente.

Accetto

GSE - ACCESSO AREA CLIENTI - REGISTRAZIONE

LA REGISTRAZIONE È STATA EFFETTUATA CORRETTAMENTE

A breve riceverà all'indirizzo comunicatoci una email con le istruzioni da eseguire per la conferma registrazione

Conservi questo codice di sicurezza che le servirà in seguito per completare la procedura

64674

FINE

GSE Area Clienti

HOME SERVIZI

Servizi

In questa sezione puoi richiedere nuovi servizi o visualizzare quelli già sottoscritti per te o per altri, ed accedere direttamente al portale informatico dedicato.

PER ME PER ALTRI

RINNOVABILI ELETTRICHE

SSP Scambio sul Posto

FUEL-MIX FuelMix

EFFICIENZA ENERGETICA

CB Certificati Bianchi

FOTOVOLTAICO

Sottoscrivi servizi

FTT-OR_18 Conti Energia

FTT-OR Conti Energia

RINNOVABILI PER I TRASPORTI

Non hai sottoscritto nessun servizio

GO Garanzia d'Origine

Ragione Sociale Partita IVA Ruolo N° conto GO Disponibili GO Prestate:

SELEZIONA PROFILO

SELEZIONA PROFILO

Seleziona il profilo di appartenenza:

Indicare una e più e-mail separate da ";" che GSE utilizzerà per le comunicazioni

e-mail:

Seleziona un profilo: <Seleziona>

Impresa o vendita Produttiva Trader

che le comunicazioni inerenti a tutte le movimentazioni Go gestite tramite la nuova piattaforma, saranno inviate esclusivamente all'indirizzo e-mail del referente ammin.

REFERENTE

Nome

Cognome

Email

Fax

Cellulare

Telefono

Regione <Seleziona>

Provincia

Comune

Località

Indirizzo

Cap

Codice Fiscale

Inserisci Pulisci

DETTAGLIO REFERENTI

Nessun referente

Convenzione tra il Gestore dei Servizi Energetici - GSE S.p.A. e l'operatore di mercato per i servizi di transazione delle Garanzie di Origine (GO)

Al sensi della Direttiva 2009/28/CE

1. Definizioni

Association of Issuing Bodies (o AIB)

Autorità competente

Certificato

Association scientifica internazionale costituita secondo il diritto belga (legge del 29 ottobre 1921 n. 0.864.645.330 e successive modificazioni).

In relazione allo svolgimento di attività legislative, governative, regolatorie o amministrative in un dato Domain, l'Autorità che, a norma delle leggi e dei regolamenti dello Stato (ed eventualmente della Regione) è responsabile delle attività relative alle Garanzie di Origine o ad altri certificati rilasciati nell'ambito di sistemi di incentivazione in riferimento allo Stato italiano tale Autorità è il Gestore dei Servizi Energetici S.p.A. - GSE.

(in qualunque forma, anche

a) le caratteristiche di una fonte energetica consumata ai fini della produzione di una data quantità di energia.

TIPOLOGIA SOGGETTO

Tipo soggetto: Nazionale Estero

SEDE LEGALE

Nazione: Regione: Provincia:
Comune: Indirizzo: Civico:
CAP:

RAPPRESENTANTE LEGALE

Nome: Cognome: Email:
Fax: Cellulare: Telefono:
Data di nascita: Luogo di nascita: Codice fiscale:

SEDE AMMINISTRATIVA

Nazione: Regione: Provincia:
Comune: Indirizzo: Civico:
CAP:

REFERENTE AMMINISTRATIVO

Nome: Email:
Fax: Telefono:
Codice fiscale:

REGIME FISCALE

Tipo regime fiscale: IVA ordinaria Esportatore abituale

CONFERMA DATI AMMINISTRATIVI

La responsabilità esclusiva in merito alla veridicità, esattezza e completezza di quanto allegato è del soggetto dichiarante

Confermo

CONDIZIONI ECONOMICHE DI GESTIONE DEL CONTO PROPRIETA

Il produttore dichiara di aver preso visione e di accettare le condizioni economiche di cui al paragrafo 6 della sezione 2 della "Procedura per l'identificazione degli impianti alimentati da fonti rinnovabili ad emissione e gestione delle certificazioni di origine per i suddetti impianti".

L'operatore di mercato dichiara:

- di aver preso visione e di accettare integralmente le condizioni contrattuali della "Convenzione tra il GSE e l'Operatore di Mercato per i servizi di transazione delle GO" disponibile sul link sottostante;
- di essere consapevole che, ai sensi del DPR 28 dicembre 2009, n. 445, la dichiarazione errata, falsa o mendace dai dati comunicati al GSE, ferme restando le conseguenze previste dalla norma, comporterà l'impossibilità per il GSE di procedere all'emissione dei certificati;
- di aver preso conoscenza di tutte le clausole e di approvare specificatamente, ai sensi e per gli effetti degli artt. 1341 e 1342 c.c., i seguenti articoli della "Convenzione tra il GSE e l'Operatore di Mercato per i servizi di transazione delle GO".

ANNEX 3 DEVICE REGISTRATION FORM

New Registration / Declaration of Changes*		Date			
<u>Registrant Details</u>					
Is the Registrant also the owner of the Device?					Yes/No*
Registrant Name		Contact person			
Street		e-mail			
City		Telephone			
Postal code		Fax			
Country					
<u>Production Device Details</u>					
Device Name		Latitude			
Street		Longitude			
City		DSO/TSO's metering ID			
Postal code		Installed capacity (kW)			
Country		<i>[domain]</i>		Date of commissioning	
Measurement Body		Grid connected		Yes/No*	
Energy Carrier of Output		Converting Energy Carriers based on GOs		Yes/No*	
Production Auxiliaries present (if yes give details)		Yes/No*			
If the Production Device is not connected directly to the grid, specify the circumstances, and additional relevant meter registration numbers:					
Energy Sources (see tables below)					
Energy Input			Technology		
Level 1	Level 2	Level3	Level 1	Level 2	Level3
Support Schemes					
Yes/No*	<i>[insert support scheme name here]</i>		Yes/No*	<i>[insert support scheme name here]</i>	
Yes/No*	<i>[insert support scheme name here]</i>		Yes/No*	<i>[insert support scheme name here]</i>	
Yes/No*	<i>[insert support scheme name here]</i>		Yes/No*	<i>[insert support scheme name here]</i>	
Independent Certification Schemes for which the device is eligible					

Signed

Registrant Authorised Signature

Signature of Production Registrar

Codice Accumulo	Tipologia di configurazione	Data Entrata Esercizio Accumulo	Data Dismissione	Capacità Accumulo Nominale	Potenza Apparente Nominale (kVA)	Potenza attiva nominale in Ricerca (kW)	Potenza Nominale in Progresso (kW)
AC_1081921_01	Configurazione 2 - sistema di accumulo integrato lato produzione bidirezionale	06/07/2019 00:00:00		7,5	4	4	4
AC_1081921_01	Configurazione 2 - sistema di accumulo integrato lato produzione bidirezionale	06/07/2019 00:00:00		7,5	4	4	4
AC_1081921_01	Configurazione 2 - sistema di accumulo integrato lato produzione bidirezionale	06/07/2019 00:00:00		7,5	4	4	4

Qualifica impianto IGO

RICHIESTA QUALIFICA

Ricerca Impianto - (Fase 1/4)

Dati Impianto - (Fase 2/4)

Scegliere - (Fase 3/4)

SOSTEGNI INVESTIMENTO

Sostegno all'investimento

SOSTEGNI UNITÀ ENERGETICA

Sostegno alla produzione: CE Sostegno totale / parziale: Parziale

Documentazione - (Fase 4/4)

Qualifica impianto IGO

RICHIESTA QUALIFICA

Ricerca Impianto - (Fase 1/4)

Dati Impianto - (Fase 2/4)

Scegliere - (Fase 3/4)

Documentazione - (Fase 4/4)

DOCUMENTAZIONE

Sono accettati SOLO DOCUMENTI TIMBRATI E FRIMATI in formato pdf e non protetti

Visualizza	Visualizza	Tipo allegato	Data salvataggio	Nome file	Data protocollo	Numero protocollo	Allegato Template
		Regolamento di attuazione del gestore in rete completo di allegati e verbale di approvazione del comitato		Documento di test.pdf			
		Relazione di verifica dell'installazione delle apparecchiature di protezione dei servizi ausiliari		Documento di test.pdf			
		Relazione di verifica dell'installazione delle apparecchiature di protezione dei servizi ausiliari di sito relativo al sistema di alimentazione dei servizi ausiliari		Documento di test.pdf			
		Relazione di verifica dell'installazione delle apparecchiature di protezione dei servizi ausiliari di sito relativo al sistema di alimentazione dei servizi ausiliari		Documento di test.pdf			
		Relazione di verifica dell'installazione delle apparecchiature di protezione dei servizi ausiliari di sito relativo al sistema di alimentazione dei servizi ausiliari		Documento di test.pdf			
		Relazione di verifica dell'installazione delle apparecchiature di protezione dei servizi ausiliari di sito relativo al sistema di alimentazione dei servizi ausiliari		Documento di test.pdf			
		Relazione di verifica dell'installazione delle apparecchiature di protezione dei servizi ausiliari di sito relativo al sistema di alimentazione dei servizi ausiliari		Documento di test.pdf			
		Relazione di verifica dell'installazione delle apparecchiature di protezione dei servizi ausiliari di sito relativo al sistema di alimentazione dei servizi ausiliari		Documento di test.pdf			
		Relazione di verifica dell'installazione delle apparecchiature di protezione dei servizi ausiliari di sito relativo al sistema di alimentazione dei servizi ausiliari		Documento di test.pdf			
		Relazione di verifica dell'installazione delle apparecchiature di protezione dei servizi ausiliari di sito relativo al sistema di alimentazione dei servizi ausiliari		Documento di test.pdf			

Aggiungi altro documento

NOTE RICHIESTA

Prova:

Dati Impianto - (Fase 2/4)

Scegliere - (Fase 3/4)

Documentazione - (Fase 4/4)

DOCUMENTAZIONE

Sono accettati SOLO DOCUMENTI TIMBRATI E FRIMATI in formato pdf e non protetti

Visualizza	Visualizza	Tipo allegato	Data salvataggio	Nome file	Data protocollo	Numero protocollo	Allegato Template
		Regolamento di attuazione del gestore in rete completo di allegati e verbale di approvazione del comitato		Documento di test.pdf			
		Relazione di verifica dell'installazione delle apparecchiature di protezione dei servizi ausiliari		Documento di test.pdf			
		Relazione di verifica dell'installazione delle apparecchiature di protezione dei servizi ausiliari di sito relativo al sistema di alimentazione dei servizi ausiliari		Documento di test.pdf			
		Relazione di verifica dell'installazione delle apparecchiature di protezione dei servizi ausiliari di sito relativo al sistema di alimentazione dei servizi ausiliari		Documento di test.pdf			
		Relazione di verifica dell'installazione delle apparecchiature di protezione dei servizi ausiliari di sito relativo al sistema di alimentazione dei servizi ausiliari		Documento di test.pdf			
		Relazione di verifica dell'installazione delle apparecchiature di protezione dei servizi ausiliari di sito relativo al sistema di alimentazione dei servizi ausiliari		Documento di test.pdf			
		Relazione di verifica dell'installazione delle apparecchiature di protezione dei servizi ausiliari di sito relativo al sistema di alimentazione dei servizi ausiliari		Documento di test.pdf			
		Relazione di verifica dell'installazione delle apparecchiature di protezione dei servizi ausiliari di sito relativo al sistema di alimentazione dei servizi ausiliari		Documento di test.pdf			
		Relazione di verifica dell'installazione delle apparecchiature di protezione dei servizi ausiliari di sito relativo al sistema di alimentazione dei servizi ausiliari		Documento di test.pdf			
		Relazione di verifica dell'installazione delle apparecchiature di protezione dei servizi ausiliari di sito relativo al sistema di alimentazione dei servizi ausiliari		Documento di test.pdf			

Aggiungi altro documento

NOTE RICHIESTA

Prova:

Autocertificazione

Il richiedente conferma che il documento è vero, reale e non è stato creato con il software di firma digitale. Il richiedente conferma che il documento è conforme alle norme tecniche di cui al punto 3.8 del regolamento (UE) 2016/1045, in vigore al momento della sottoscrizione della richiesta di beneficio eventualmente collegata e che nessuno potrà pretendere di essere autorizzato a modificare il documento. Il richiedente conferma che il documento è conforme alle norme tecniche di cui al punto 3.8 del regolamento (UE) 2016/1045, in vigore al momento della sottoscrizione della richiesta di beneficio eventualmente collegata e che nessuno potrà pretendere di essere autorizzato a modificare il documento. Il richiedente conferma che il documento è conforme alle norme tecniche di cui al punto 3.8 del regolamento (UE) 2016/1045, in vigore al momento della sottoscrizione della richiesta di beneficio eventualmente collegata e che nessuno potrà pretendere di essere autorizzato a modificare il documento.

Access to CERTIGY from Portale GO

Landing Page of Certigtg:

ANNEX 4 PRODUCTION/CONSUMPTION DECLARATION

Insert a sample of the form here.

Request for the issue of EECS Certificates in respect of Hydro Power plants with pumping storage

SELF-DECLARATION

(in compliance with art. 47 of D.P.R. n. 445/2000)

I, the undersigned, born in, on, and resident in, province of, fiscal code, acting as of the Company, tax code N., and VAT number, with registered office incivic number ...: postal code Municipality Province, responsible for the qualified power plants (ID number)....., located in,

aware of the administrative sanctions the criminal liability in case of mendacious declaration as provided for by art.23 of Legislative Decree No.28/2011 and by art. 76, Presidential Decree n. 445 of 28 December 2000 respectively

DECLARE

that with regard to the above power plant the following production and consumption data have been registered:

Month	Consumption of pumping [KWh]	Efficiency of pumping cycle (as resulted in the assessment of PD qualification criteria)	Gross electricity produced by pumping[KWh]	Total gross electricity produced [KWh]	% Electricity by pumping
01/year X					
02/ year X					
03/ year X					
04/ year X					

05/ year X					
06/ year X					
07/ year X					
08/ year X					
09/ year X					
10/ year X					
11/ year X					
12/ year X					

Signature

Date

.....

NOTE FOR FILLING IN THE TEMPLATE

The above declaration has to be attached to the back of the copy that is declared as a truthful copy of the original (as provided for by art. 47, D.P.R. n. 445/2000).

The present declaration does not require an authentication of the signature by a public official and can be signed directly by the declarant. It has to be sent to the proceeding administration, along with a photocopy of a valid document of identity, without other formalities.

One declaration of conformity with the original must be attached to each submitted photocopy.

Production declaration template for hybrid power plants

Request for the issue of EECS Certificates in respect of Hybrid Power Plants and a specific period of time

(in compliance with art. 47 of D.P.R. n. 445/2000)

I, the undersigned, born in, on, and resident in, province of, fiscal code, acting as, of the Company, tax code N., and VAT number, with registered office in, civic number ...: postal code Municipality Province, responsible for the qualified power plants (ID number)....., located in,

aware of the administrative sanctions the criminal liability in case of mendacious declaration as provided for by art.23 of Legislative Decree No.28/2011 and by art. 76, Presidential Decree n. 445 of 28 December 2000 respectively

DECLARE

that the above power plant has used the following fuels:

FUEL	[Kg] available at the beginning of the period	[Kg] loaded in the period	[Kg] burned in the period	[Kg] available at the end of the period

and the related characteristics:

Fuel	[Kg] burned	Lower Calorific value [KJ/Kg]	Plant Efficiency [KWhel/KJ]	[KWhel] injected into the grid

Share of RES electricity [%]

RES electricity [KWhel]



Therefore ask for

the issuing of No..... of EECS certificates, related to the production of (month)

Date

Signature

.....

.....

NOTE FOR FILLING IN THE TEMPLATE

The above declaration has to be attached to the back of the copy that is declared as a truthful copy of the original (as provided for by art. 47, D.P.R. n. 445/2000).

The present declaration does not require an authentication of the signature by a public official and can be signed directly by the declarant. It has to be sent to the proceeding administration, along with a photocopy of a valid document of identity, without other formalities.

One declaration of conformity with the original must be attached to each submitted photocopy.



ANNEX 5 EECS CANCELLATION STATEMENT

Insert a sample of the form here.

Template

This Cancellation Statement acts as a receipt for the <EECS Scheme> Certificates listed below and for the purpose shown.

Unique identification number of this Cancellation statement: xxxxxxxxxxxxxxxx .

With this Cancellation Statement, released on the <yyyy-mm-dd>, the indicated certificates are no longer tradable. Onward sale of this Cancellation Statement is prohibited.

The environmental qualities and other attributes of the associated energy have been consumed and that this Cancellation Statement and these Certificates may not be transferred to any party other than the energy supplier or end-consumer identified in this Cancellation Statement.

The beneficiary has declared that this cancellation corresponds with consumption of energy in the same Energy Carrier as the Energy Carrier identified on the Certificates.

the Certificates.



Cancellation Statement

This cancellation statement provides the proof of origin for 3 866 MWh consumed energy.

This cancellation statement proves that 3 866 Guarantees of Origin has been cancelled in the Italian Energy Certificate System powered by GSE.

Sector

Sector Electricity End Consumer Type Industrial Customers

Performed by

Account Holder Name

Account Holder Code

VAT Number

Account

Domain Italy

Street

Postal Code

City

Country Italy

On behalf of

Name of Beneficiary

Beneficiary VAT Number

Consumption Start 2023-01-01

Consumption End 2023-03-31

Country of Consumption Italy

Location of Beneficiary

Usage Category Disclosure

Type of Beneficiary End Consumer



Transaction Information

Transaction Date 2023-07-21 11:18
Transaction Number 2023072100021
Cancellation Purpose Riduzione delle emissioni di scopo 2 dell'organizzazione
Volume Cancelled (sum)



Rome, 2023-08-01

[View cancellation statement here.](#)

List of production devices included in cancellation

Production Device Name	[REDACTED]
Production Device ID	[REDACTED]
Country	Italy - GSE
Electrical Capacity, MW	13,6
Date Operational	2020-12-15
Location	[REDACTED]
Technology	T020000 - Wind / Unspecified / Unspecified
Energy Source	F01050100 - Renewable / Mechanical source or other / Wind / Unspecified
Volume Cancelled (sum)	[REDACTED]



Certificate Bundles cancelled

Certificate Number (From - To)	Volume	Domain	Energy Source Technology	Issuing Date	Production Period	Production Device (Name, ID, Capacity)	Trading Schemes	Support Schemes
		Italy	F01050100 T020000	2023-06-15	2023-03 2023-03		EECS GO	No support